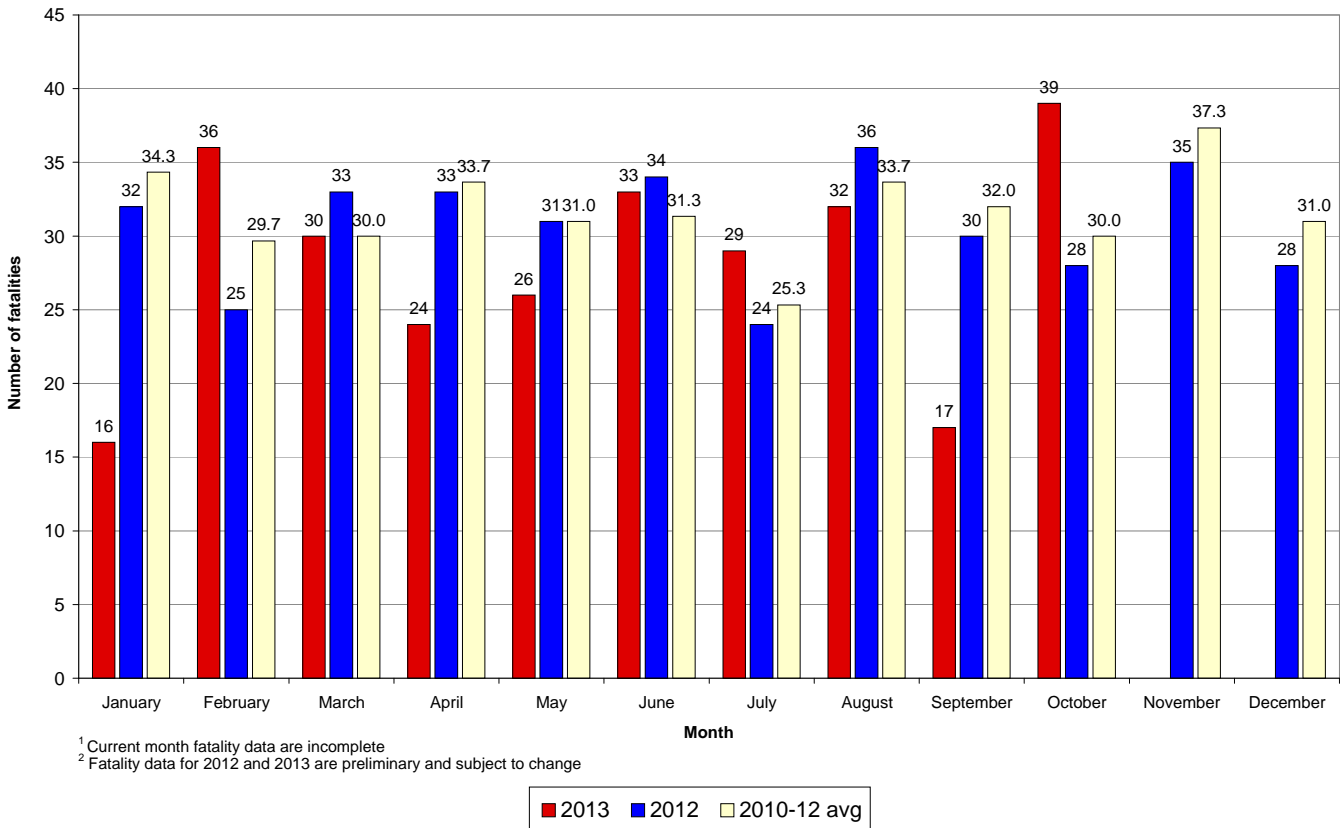


	2013	2012	+/-	% change
Calendar year to date	282	305	-23	-8%
October to date	39	27	12	44%
12-month period to date	346	385	-39	-10%

Fatalities 12-month moving total - 2008 to date



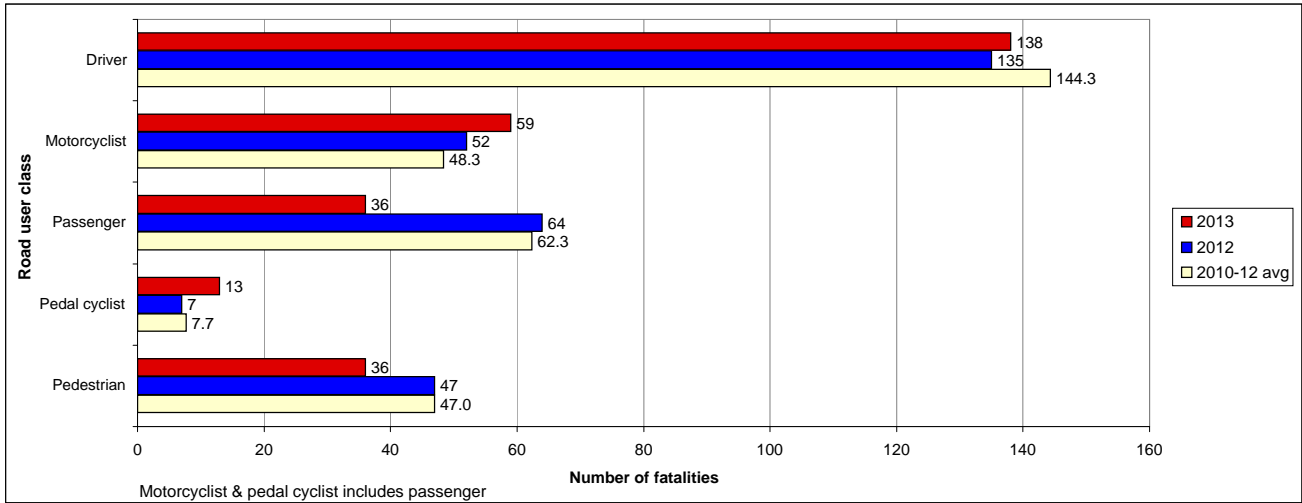
Road fatality comparative statistics by month<sup>1</sup> for 2012<sup>2</sup>, 2013<sup>2</sup> and the average for the 3-year period 2010-2012<sup>2</sup>



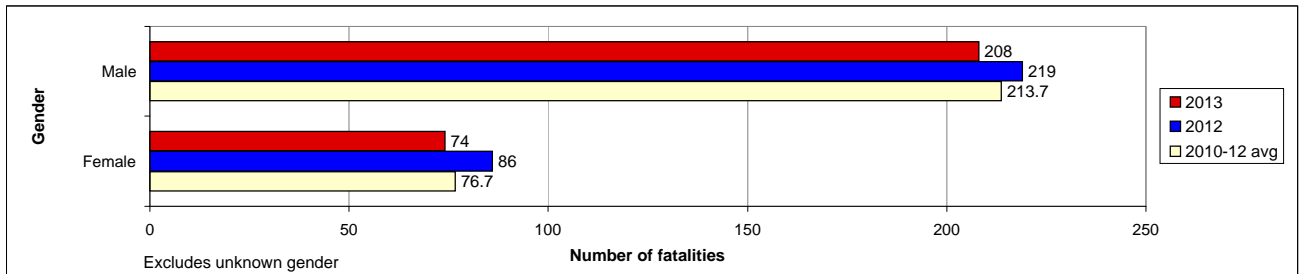
Preliminary Data - Note: Fatalities will be removed from statistics if subsequent Police or Coronial investigation shows that they did not fall within National reporting guidelines. Fatalities will be added from a crash occurring prior to today's date where a person subsequently dies within 30 days or the crash is reported late. Fatalities are deaths which occurred within 30 days of a crash as a result of injuries received in the crash. The crash must have occurred within the surveyed road reserve.

Road fatality comparative statistics for the period 1 January to 30 October 2012, 2013 and the average for the same period in 2010, 2011 and 2012

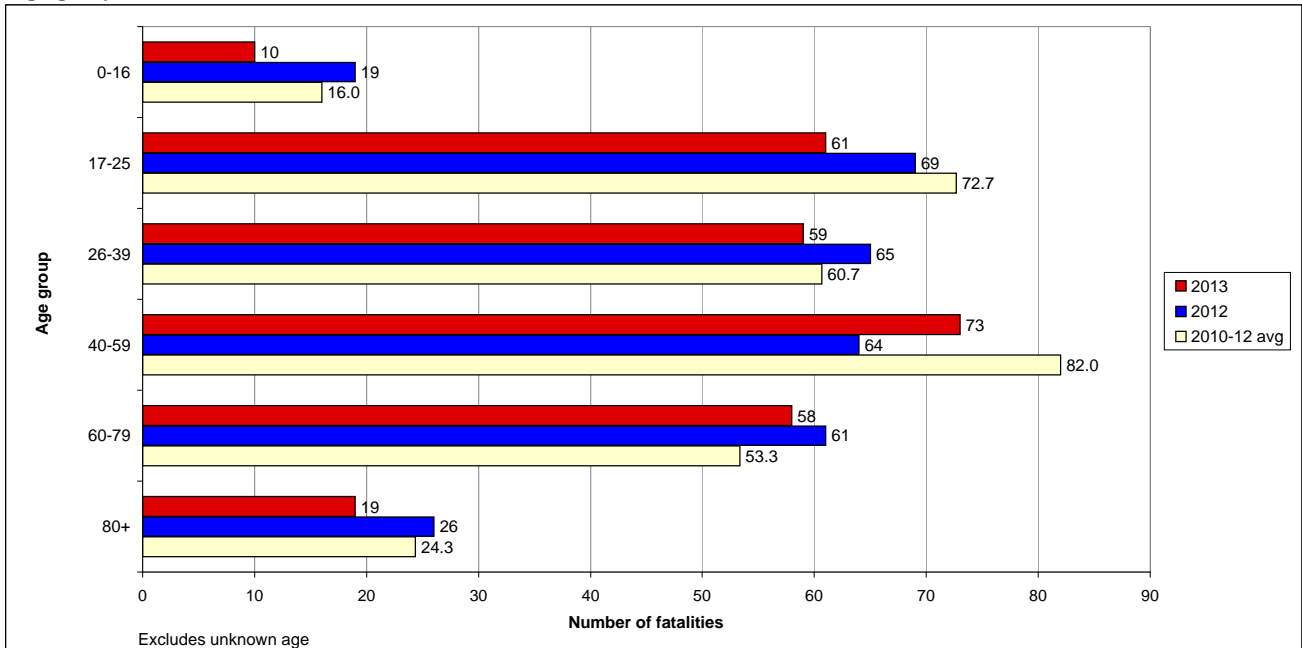
Road user class



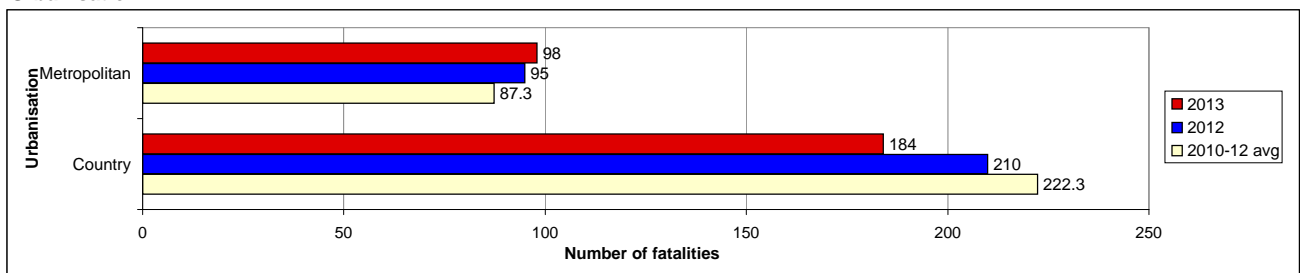
Gender



Age group



Urbanisation



Road fatality comparative statistics for the period 1 January to 30 October 2012, 2013 and the average for the same period in 2010, 2011 and 2012

**Road user class**

	2013	2012	+/-	% change	3-year average
Driver	138	135	3	2%	144.3
Motorcyclist	59	52	7	13%	48.3
Passenger	36	64	-28	-44%	62.3
Pedal cyclist	13	7	6	86%	7.7
Pedestrian	36	47	-11	-23%	47.0

Motorcyclist & pedal cyclist includes passenger

**Gender**

	2013	2012	+/-	% change	3-year average
Male	208	219	-11	-5%	213.7
Female	74	86	-12	-14%	76.7

Excludes unknown gender

**Age group**

	2013	2012	+/-	% change	3-year average
0-16	10	19	-9	-47%	16.0
17-25	61	69	-8	-12%	72.7
26-39	59	65	-6	-9%	60.7
40-59	73	64	9	14%	82.0
60-79	58	61	-3	-5%	53.3
80+	19	26	-7	-27%	24.3

Excludes unknown age

**Urbanisation**

	2013	2012	+/-	% change	3-year average
Metropolitan	98	95	3	3%	87.3
Country	184	210	-26	-12%	222.3

# Road Toll Update for NSW

up to and including  
Wednesday, 30 October 2013

**Fatalities advised since last update issued: 3**

**Fatalities excluded since last update issued: 0**

	CALENDAR YEAR TO MIDNIGHT 30 October					12-MONTH PERIOD ENDING 30 October				
	2013 (Prelim)	2012 (Final)	DIFF.	3-YEAR AVERAGE	DIFF.	2013 (Prelim)	2012 (Final)	DIFF.	3-YEAR AVERAGE	DIFF.
<b>Fatal crashes</b>	<b>267</b>	<b>280</b>	<b>-13</b>	<b>282</b>	<b>-15</b>	<b>323</b>	<b>355</b>	<b>-32</b>	<b>345</b>	<b>-22</b>
<b>Fatalities</b>										
Driver	138	135	3	144	-6	167	173	-6	175	-8
Passenger	36	64	-28	62	-26	54	87	-33	84	-30
Motorcyclist*	59	52	7	48	11	68	61	7	57	11
Pedestrian	36	47	-11	47	-11	44	56	-12	54	-10
Pedal cyclist*	13	7	6	8	5	13	8	5	9	4
Other	0	0	0	0	0	0	0	0	0	0
<b>TOTAL KILLED</b>	<b>282</b>	<b>305</b>	<b>-23</b>	<b>310</b>	<b>-28</b>	<b>346</b>	<b>385</b>	<b>-39</b>	<b>380</b>	<b>-34</b>

\* Includes passengers

<b>FINAL 2012 TOTALS:</b>	<b>Fatal crashes 336</b>	<b>Fatalities 369</b>
---------------------------	--------------------------	-----------------------

Preliminary Data -Note: Fatalities will be removed from statistics if subsequent Police or Coronial investigation shows that they did not fall within National reporting guidelines. Fatalities will be added from a crash occurring prior to today's date where a person subsequently dies within 30 days or the crash is reported late. Typically, these variations may result in a statewide annual decrease of up to 12 fatalities from the initial preliminary figure.

[Click here](#) for monthly crash statistics

[Click here](#) for more information about traffic crash statistics

[Click here](#) for more information about the Centre for Road Safety