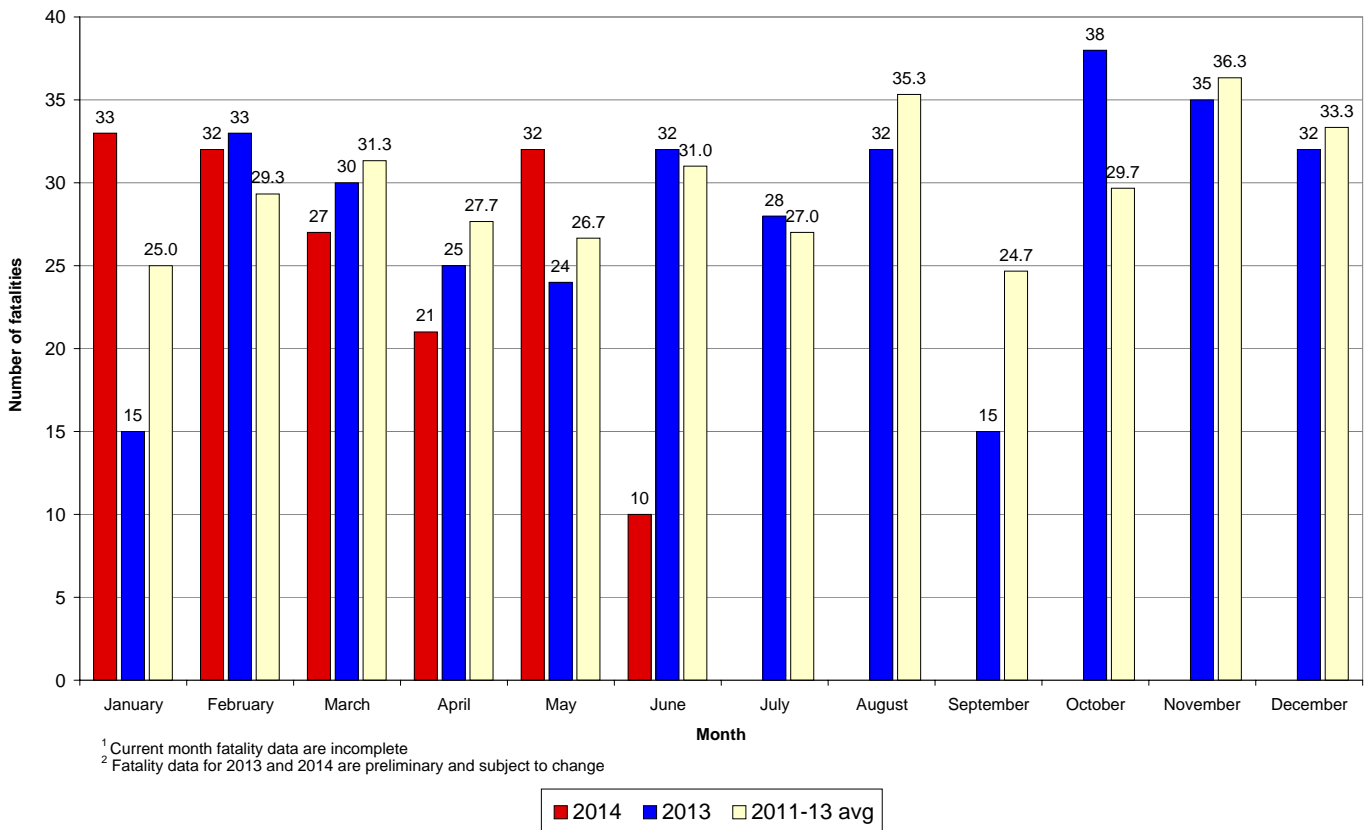


	2014	2013	+/-	% change
Calendar year to date	155	147	8	5%
June to date	10	20	-10	-50%
12-month period to date	347	342	5	1%

Fatalities 12-month moving total - 2009 to date



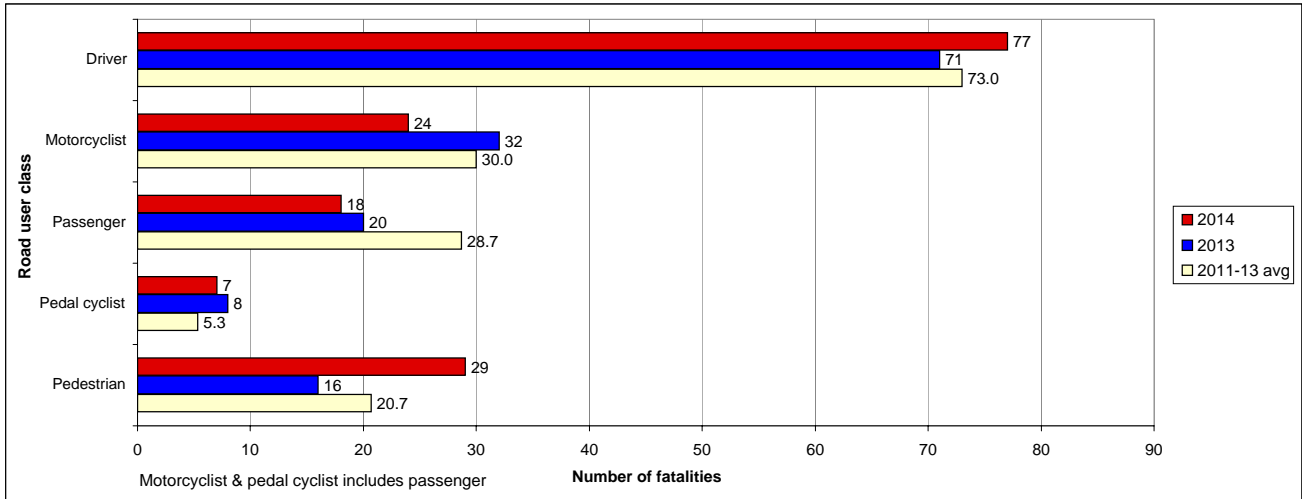
Road fatality comparative statistics by month<sup>1</sup> for 2013<sup>2</sup>, 2014<sup>2</sup> and the average for the 3-year period 2011-2013<sup>2</sup>



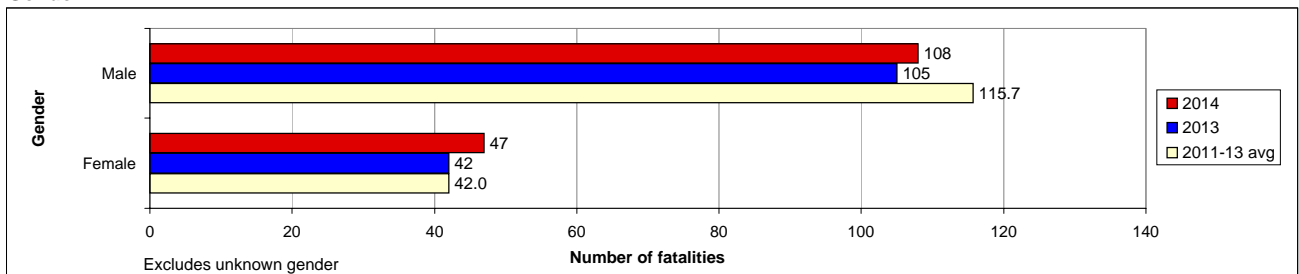
Preliminary Data - Note: Fatalities will be removed from statistics if subsequent Police or Coronial investigation shows that they did not fall within National reporting guidelines. Fatalities will be added from a crash occurring prior to today's date where a person subsequently dies within 30 days or the crash is reported late. Fatalities are deaths which occurred within 30 days of a crash as a result of injuries received in the crash. The crash must have occurred within the surveyed road reserve.

Road fatality comparative statistics for the period 01 January to 15 June 2013, 2014 and the average for the same period in 2011, 2012 and 2013

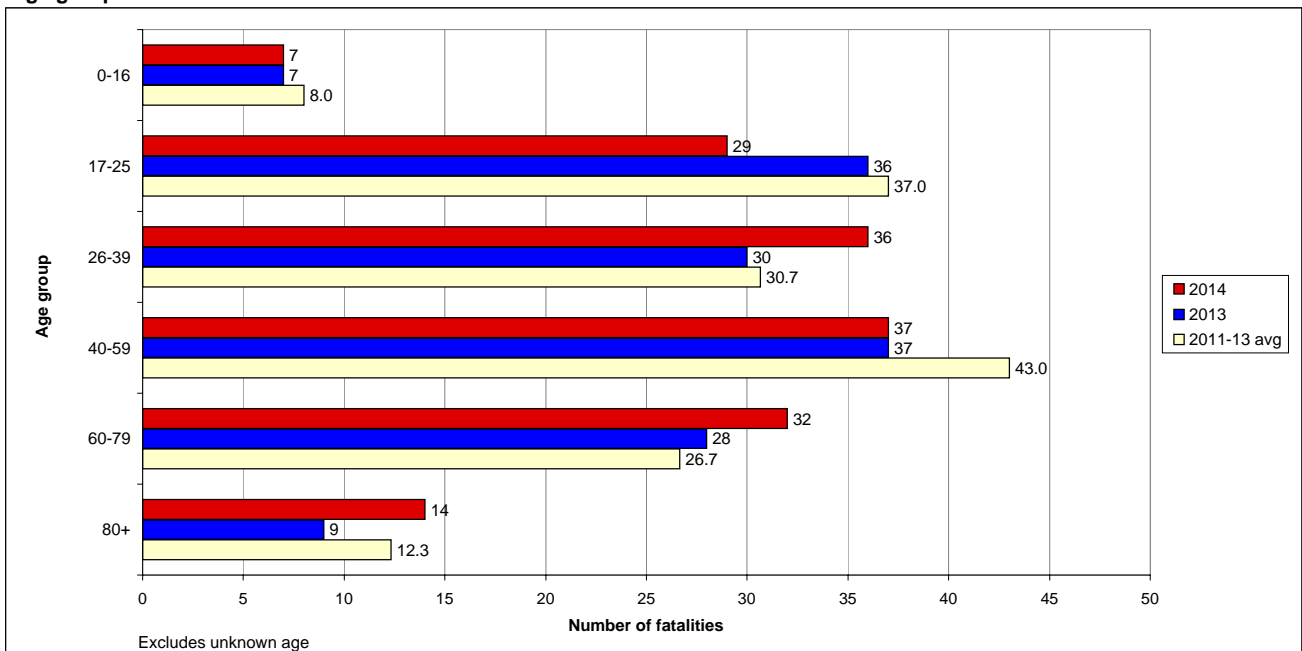
Road user class



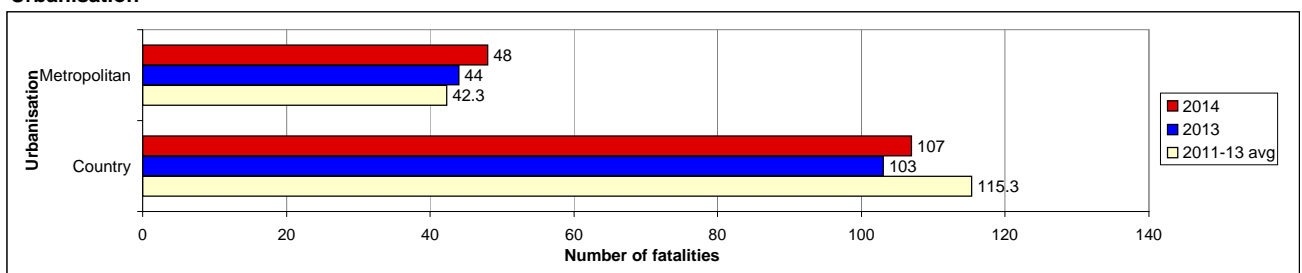
Gender



Age group



Urbanisation



**Road fatality comparative statistics for the period 01 January to 15 June 2013, 2014 and the average for the same period in 2011, 2012 and 2013**

**Road user class**

	<b>2014</b>	<b>2013</b>	<b>+/-</b>	<b>% change</b>	<b>3-year average</b>
Driver	77	71	6	8%	73.0
Motorcyclist	24	32	-8	-25%	30.0
Passenger	18	20	-2	-10%	28.7
Pedal cyclist	7	8	-1	-13%	5.3
Pedestrian	29	16	13	81%	20.7

Motorcyclist & pedal cyclist includes passenger

**Gender**

	<b>2014</b>	<b>2013</b>	<b>+/-</b>	<b>% change</b>	<b>3-year average</b>
Male	108	105	3	3%	115.7
Female	47	42	5	12%	42.0

Excludes unknown gender

**Age group**

	<b>2014</b>	<b>2013</b>	<b>+/-</b>	<b>% change</b>	<b>3-year average</b>
0-16	7	7	0	0%	8.0
17-25	29	36	-7	-19%	37.0
26-39	36	30	6	20%	30.7
40-59	37	37	0	0%	43.0
60-79	32	28	4	14%	26.7
80+	14	9	5	56%	12.3

Excludes unknown age

**Urbanisation**

	<b>2014</b>	<b>2013</b>	<b>+/-</b>	<b>% change</b>	<b>3-year average</b>
Metropolitan	48	44	4	9%	42.3
Country	107	103	4	4%	115.3

# Road Toll Update for NSW

up to and including  
Sunday, 15 June 2014

**Fatalities advised since last update issued: 2**  
**Fatalities excluded since last update issued: 2**

	CALENDAR YEAR TO MIDNIGHT 15 June					12-MONTH PERIOD ENDING 15 June				
	2014 (Prelim)	2013 (Prelim)	DIFF.	3-YEAR AVERAGE	DIFF.	2014 (Prelim)	2013 (Prelim)	DIFF.	3-YEAR AVERAGE	DIFF.
<b>Fatal crashes</b>	<b>149</b>	<b>142</b>	<b>7</b>	<b>146</b>	<b>3</b>	<b>328</b>	<b>321</b>	<b>7</b>	<b>332</b>	<b>-4</b>
<b>Fatalities</b>										
Driver	77	71	6	73	4	167	162	5	170	-3
Passenger	18	20	-2	29	-11	47	64	-17	75	-28
Motorcyclist*	24	32	-8	30	-6	64	62	2	57	7
Pedestrian	29	16	13	21	8	56	42	14	49	7
Pedal cyclist*	7	8	-1	5	2	13	12	1	10	3
Other	0	0	0	0	0	0	0	0	0	0
<b>TOTAL KILLED</b>	<b>155</b>	<b>147</b>	<b>8</b>	<b>158</b>	<b>-3</b>	<b>347</b>	<b>342</b>	<b>5</b>	<b>362</b>	<b>-15</b>

\* Includes passengers

**PRELIMINARY 2013 TOTALS: Fatal crashes 321 Fatalities 339**

Preliminary Data -Note: Fatalities will be removed from statistics if subsequent Police or Coronial investigation shows that they did not fall within National reporting guidelines. Fatalities will be added from a crash occurring prior to today's date where a person subsequently dies within 30 days or the crash is reported late. Typically, these variations may result in a statewide annual decrease of up to 12 fatalities from the initial preliminary figure.

[Click here](#) for monthly crash statistics

[Click here](#) for more information about traffic crash statistics

[Click here](#) for more information about the Centre for Road Safety