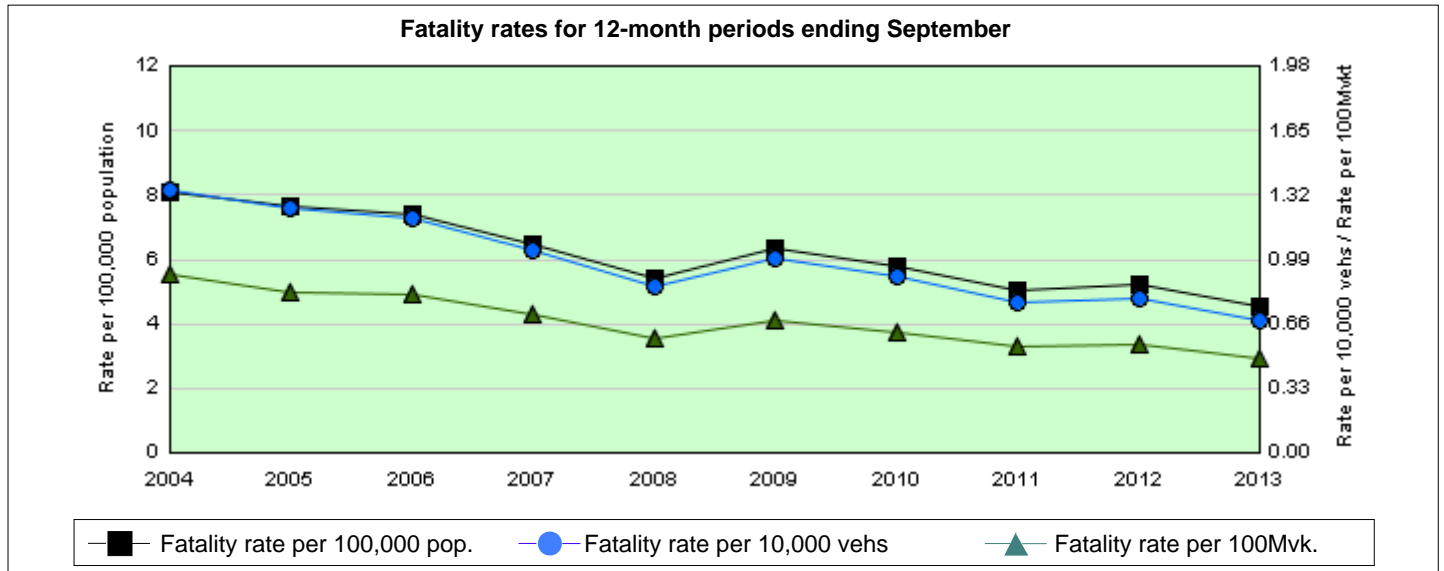


Monthly Bulletin of Preliminary Traffic Crash Data September 2013

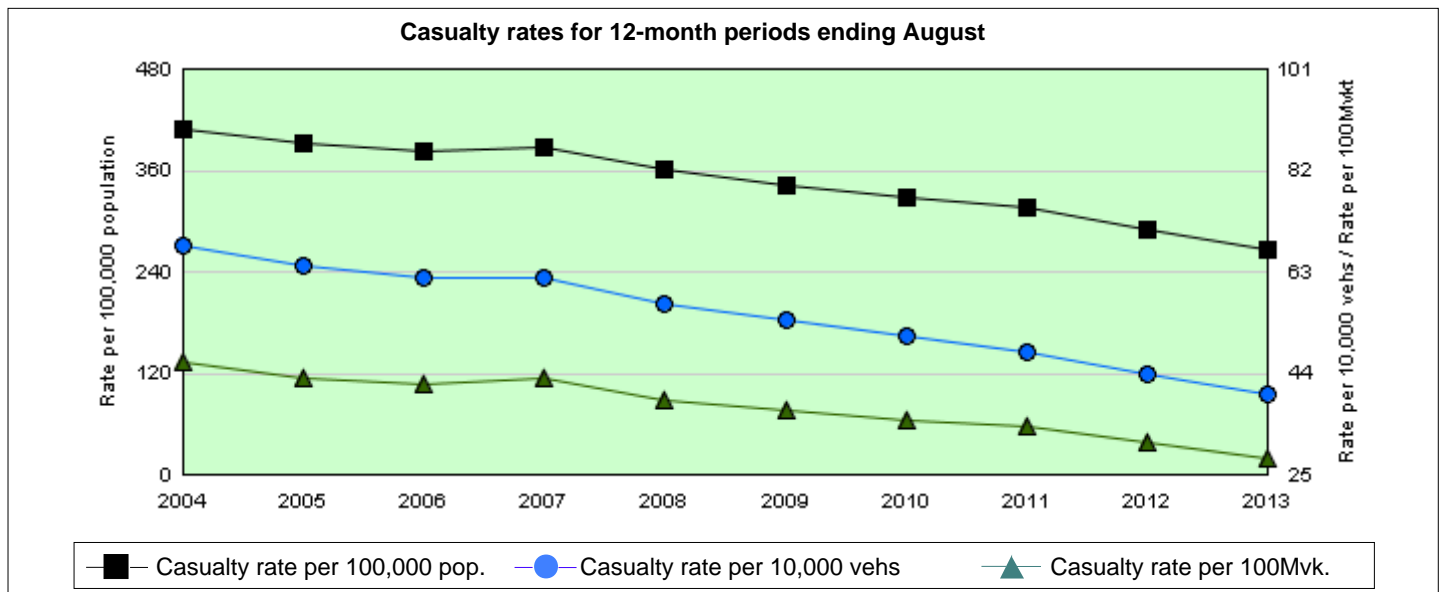
Fatality rates for 12-month period ending September 2013

Number of fatalities	334
Rate per 100,000 population ¹	4.5
Rate per 10,000 vehicles ²	0.7
Rate per 100 million vehicle kilometres travelled ³	0.5



Casualty rates for 12-month period ending August 2013

Number of casualties*	19,619
Rate per 100,000 population ¹	267
Rate per 10,000 vehicles ²	40
Rate per 100 million vehicle kilometres travelled ³	28



¹ Based on preliminary estimated population data

² Based on RMS vehicle registration data

³ Travel estimates post 2010 are based on long term growth in ABS estimated travel (1998 to 2010) extrapolated from the last published survey (2010)

* Based on preliminary data supplied by the NSW Police from the Computerised Operational Policing System (COPS) database. Casualty statistics are 1 month in arrears.

TABLE OF CONTENTS

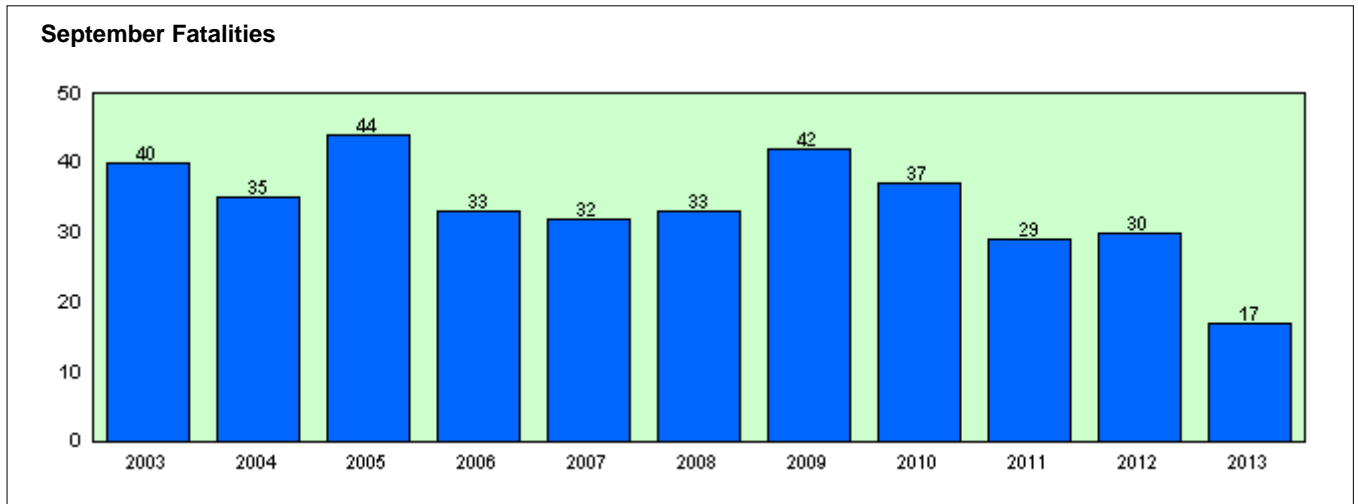
SECTION 1: MONTHLY COMPARISON AND KEY POINTS	1
SECTION 2: MONTHLY STATISTICS	2
2.1 FATALITIES	2
2.2 FATAL CRASHES	3
2.3 COMPARISON WITH OTHER STATES	4
2.3.1 Fatalities	4
2.3.2 Fatal Crashes	4
SECTION 3: TRENDS	5
3.1 FATALITIES - OVERALL TREND	5
3.1.1 Number of fatalities for 12 months ending September 2013, road user class	5
3.1.2 Number of fatalities for 12 months ending September 2013, sex of fatality	5
3.1.3 Number of fatalities for 12 months ending September 2013, age of fatality	6
3.1.4 Number of fatalities for 12 months ending September 2013, urbanisation	7
3.1.5 Number of fatalities for 12 months ending September 2013, RMS Region	7
3.2 FACTORS INVOLVED IN FATAL CRASHES	8
3.2.1 Number of fatal crashes for 12 months ending September 2013, speeding involvement	8
3.2.2 Number of fatal crashes for 12 months ending September 2013, fatigue involvement	8
3.2.3 Number of fatal crashes for 12 months ending September 2013, alcohol involvement	8
3.3 SAFETY DEVICE USAGE OF FATALITIES	9
3.3.1 Number of road vehicle fatalities for 12 months ending September 2013, safety device usage, road user class	9
3.4 MOTOR VEHICLE CONTROLLERS INVOLVED IN FATAL CRASHES	10
3.4.1 Number of motor vehicle controllers involved in fatal crashes for 12 months ending September 2013, sex of controller	10
3.4.2 Number of motor vehicle controllers involved in fatal crashes for 12 months ending September 2013, age of controller	10
3.4.3 Number of motor vehicle controllers involved in fatal crashes for 12 months ending September 2013, alcohol involvement	10
3.5 CASUALTIES - OVERALL TREND	11
3.5.1 Twelve months comparison	11
3.5.2 Year-to-date comparison	11

Explanatory Notes

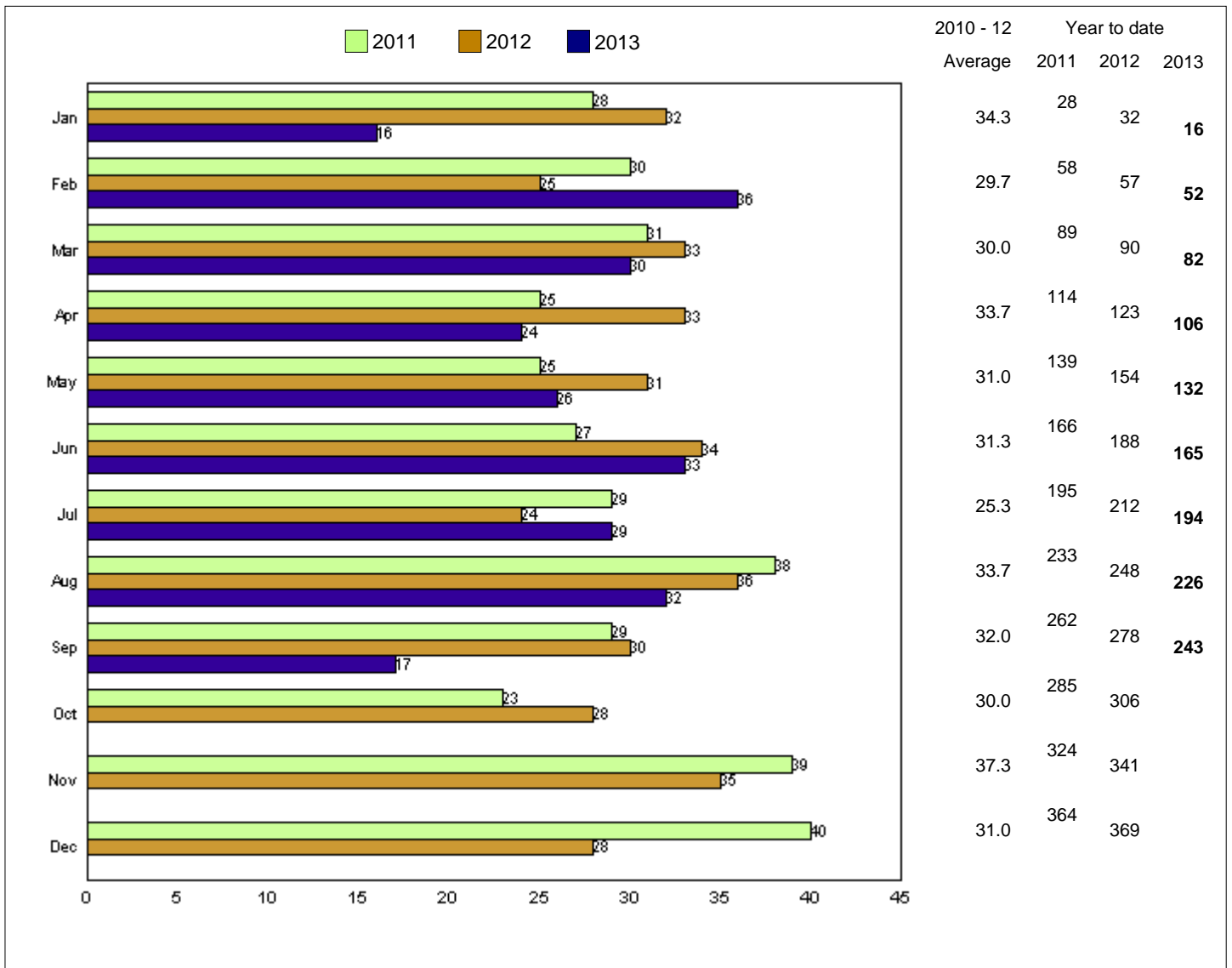
- * Data are preliminary and are compiled on the first working day of the month.
- * Casualty figures reported in Section 3.5 are based on preliminary data supplied by the NSW Police Force. They are comprised of all casualties, including fatalities.
- * Vehicle kilometres travelled are estimates based on changes in fuel consumption since the Australian Bureau of Statistics Survey of Motor Vehicle Use.

SECTION 1: MONTHLY COMPARISON AND KEY POINTS

NSW road fatalities for September: 2003 - 2013



NSW road fatalities: monthly comparison



This month's key points

There were 17 fatalities during September 2013, 13 less fatalities (43 per cent) than September 2012 and the lowest September total since monthly records began in 1936 and the second lowest calendar month since at least 1936. The lowest calendar month since 1936 was in January 2013 with 16 fatalities.

There were 243 fatalities during the January to September 2013 period, 35 (13 per cent) fewer fatalities than the corresponding period in 2012 and the lowest January to September total since records began in 1936.

SECTION 2: MONTHLY STATISTICS

2.1 FATALITIES

	Sep 2013	Sep 2012	Differ- ence	Year to Date 2013	Year to Date 2012	Differ- ence
Road User Class						
Driver	9	15	-6	123	121	2
Passenger	1	8	-7	31	57	-26
Pedestrian	2	4	-2	29	44	-15
Motorcyclist ¹	5	1	4	48	49	-1
Pedal cyclist ¹	0	2	-2	12	7	5
Other	0	0	0	0	0	0
Total	17	30	-13	243	278	-35
Age (years)						
0-4	0	0	0	0	2	-2
5-16	0	3	-3	8	16	-8
17-20	2	4	-2	24	37	-13
21-25	2	2	0	28	26	2
26-29	0	2	-2	19	25	-6
30-39	3	4	-1	35	34	1
40-49	1	2	-1	29	27	2
50-59	6	5	1	34	33	1
60-69	2	4	-2	29	33	-4
70+	1	3	-2	36	44	-8
Unknown	0	1	-1	1	1	0
Total	17	30	-13	243	278	-35
Sex						
Male	12	23	-11	174	199	-25
Female	5	7	-2	69	79	-10
Total²	17	30	-13	243	278	-35
RMS Region						
Sydney	7	7	0	68	82	-14
Northern	4	5	-1	52	59	-7
Hunter	1	8	-7	33	47	-14
Southern	1	2	-1	35	40	-5
South West	1	2	-1	31	21	10
Western	3	6	-3	24	29	-5
Total	17	30	-13	243	278	-35
Road Classification						
Freeway/motorway	0	1	-1	3	5	-2
State highway	5	10	-5	70	76	-6
Other classified road ³	5	6	-1	84	92	-8
Unclassified road	7	13	-6	86	105	-19
Total	17	30	-13	243	278	-35

¹ Includes passengers

² Includes unknown sex

³ Includes Main Road, Secondary Road and Tourist Road

2.2 FATAL CRASHES

	Sep 2013	Sep 2012	Differ- ence	Year to Date 2013	Year to Date 2012	Differ- ence
Urbanisation						
Sydney Metropolitan Area	7	5	2	61	70	-9
Newcastle Metropolitan Area	0	2	-2	9	7	2
Wollongong Metropolitan Area	1	1	0	8	7	1
Country urban (speed limit =<80km/h)	2	7	-5	62	70	-8
Country non-urban (speed limit >80km/h)	7	13	-6	91	98	-7
Country unknown (speed limit unknown)	0	0	0	0	1	-1
Total	17	28	-11	231	253	-22
Location Type						
Intersection	4	2	2	46	51	-5
Non-Intersection	13	26	-13	185	202	-17
Total	17	28	-11	231	253	-22
Route						
Princes Highway	0	0	0	7	2	5
Hume Highway	0	0	0	8	5	3
Great Western Highway	0	0	0	3	3	0
New England Highway	1	0	1	2	6	-4
Pacific Highway	1	5	-4	21	18	3
Newell Highway	1	0	1	5	1	4
All other routes	14	23	-9	185	218	-33
Total	17	28	-11	231	253	-22
Road Classification						
Freeway/motorway	0	1	-1	3	4	-1
State highway	5	9	-4	65	65	0
Other classified road ¹	5	6	-1	82	84	-2
Unclassified road	7	12	-5	81	100	-19
Total	17	28	-11	231	253	-22
RMS Region						
Sydney	7	7	0	65	78	-13
Northern	4	5	-1	45	56	-11
Hunter	1	8	-7	32	44	-12
Southern	1	2	-1	35	32	3
South West	1	2	-1	30	17	13
Western	3	4	-1	24	26	-2
Total	17	28	-11	231	253	-22
Type of Crash						
Car crash	14	20	-6	158	174	-16
Light truck crash	3	5	-2	41	45	-4
Heavy truck crash	2	6	-4	39	47	-8
Heavy rigid truck crash	1	3	-2	18	17	1
Articulated truck crash	2	3	-1	24	30	-6
Bus crash	0	1	-1	2	6	-4
Motorcycle crash	5	1	4	47	49	-2
All fatal crashes ²	17	28	-11	231	253	-22

¹ Includes Main Road, Secondary Road and Tourist Road

² The type of crash categories are not mutually exclusive and must not be added together.

2.3 COMPARISON WITH OTHER STATES

Please note that data included in this section represent statistics for the previous month¹

2.3.1 Fatalities

	Aug 2013	Aug 2012	Differ- ence	Year to date 2013	Year to date 2012	Differ- ence
State/Territory						
New South Wales	32	36	-4	226	248	-22
Victoria	19	25	-6	156	181	-25
Queensland	24	33	-9	190	180	10
South Australia	8	9	-1	75	62	13
Western Australia	9	12	-3	109	120	-11
Tasmania	3	2	1	20	17	3
Northern Territory	5	9	-4	24	34	-10
Australian Capital Territory	1	0	1	4	6	-2
Total	101	126	-25	804	848	-44

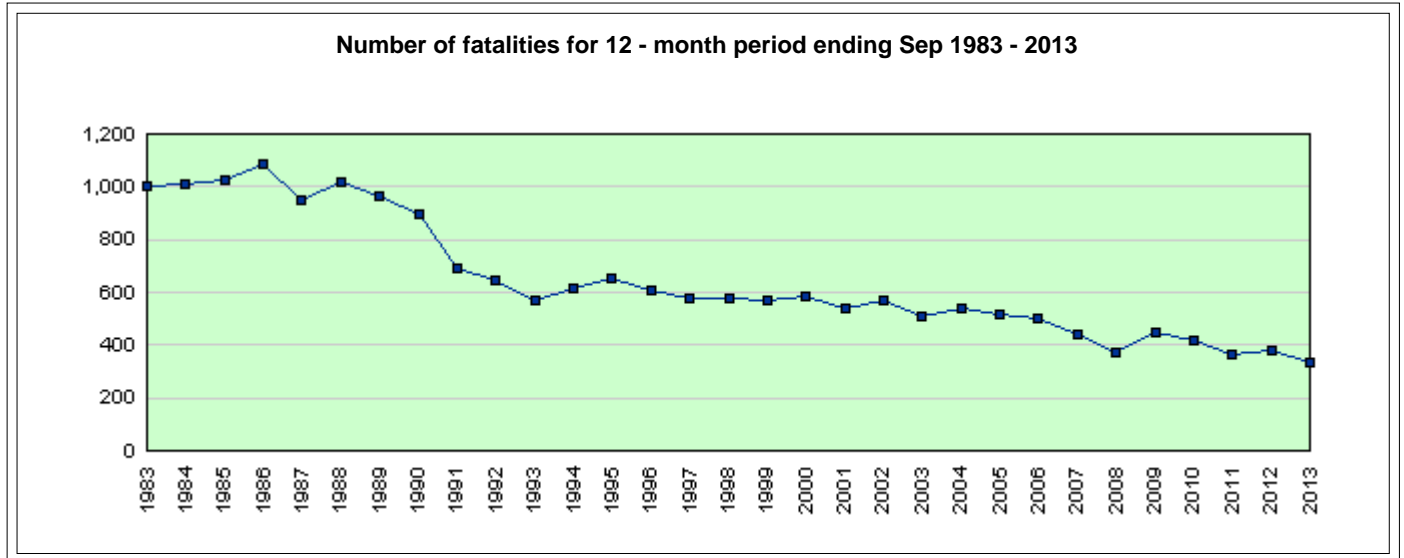
2.3.2 Fatal Crashes

	Aug 2013	Aug 2012	Differ- ence	Year to date 2013	Year to date 2012	Differ - ence
State/Territory						
New South Wales	29	31	-2	214	225	-11
Victoria	19	24	-5	147	170	-23
Queensland	21	28	-7	170	167	3
South Australia	6	6	0	67	56	11
Western Australia	8	11	-3	98	116	-18
Tasmania	3	2	1	20	17	3
Northern Territory	3	7	-4	21	29	-8
Australian Capital Territory	1	0	1	4	6	-2
Total	90	109	-19	741	786	-45

¹ Source: Commonwealth Department of Infrastructure and Transport

SECTION 3: TRENDS

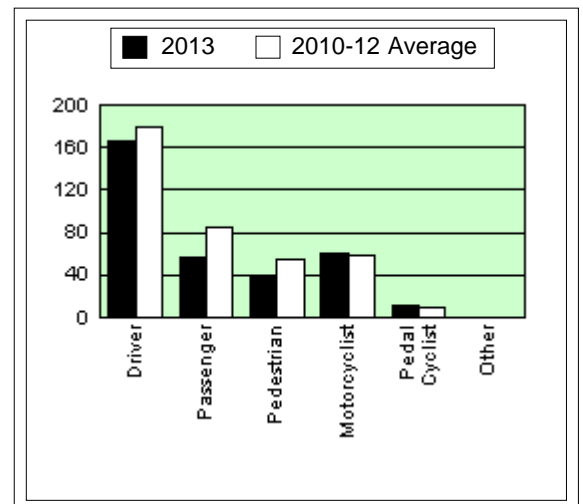
3.1 FATALITIES - OVERALL TREND



3.1.1 Number of fatalities for 12 months ending September 2013, road user class

Road User Class ¹	2013	2010-12 Average	% Change
Driver	166	178.3	-6.9%
Passenger	56	84.3	-33.6%
Pedestrian	40	54.7	-26.8%
Motorcyclist	60	58.7	2.3%
Pedal Cyclist	12	10.0	20.0%
Other	0	0.0	N/A
Total	334	386.0	-13.5%

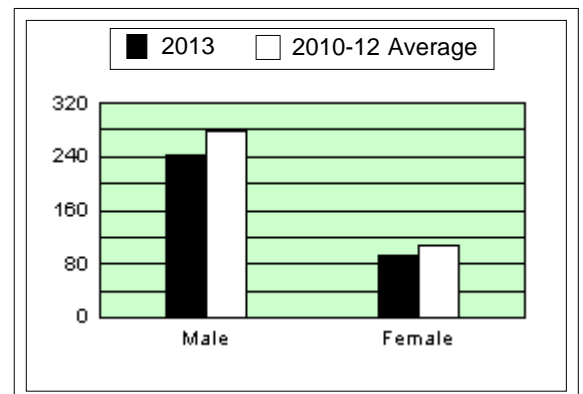
¹ The categories motorcyclist and pedal cyclist include passengers.



3.1.2 Number of fatalities for 12 months ending September 2013, sex of fatality

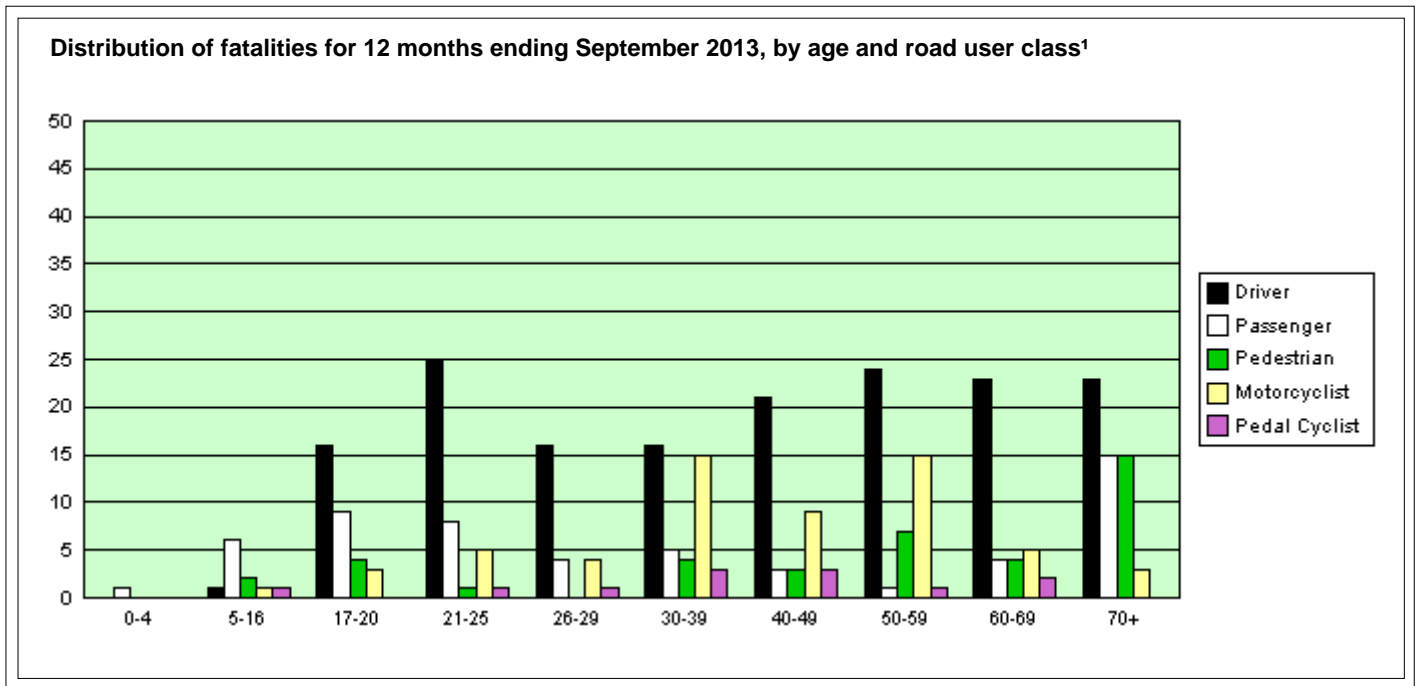
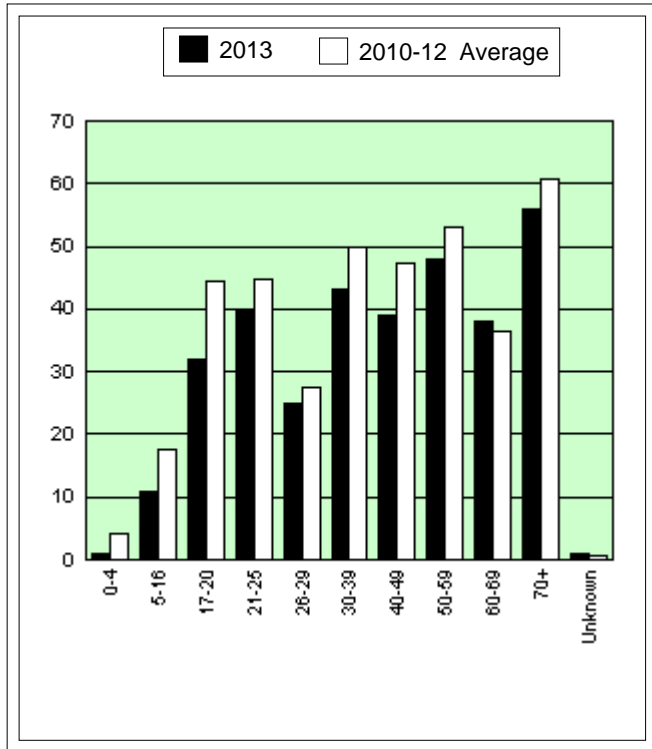
Sex of fatality	2013	2010-12 Average	% Change
Male	242	278.0	-12.9%
Female	92	108.0	-14.8%
Total²	334	386.0	-13.5%

² Includes unknown sex



3.1.3 Number of fatalities for 12 months ending September 2013, age of fatality

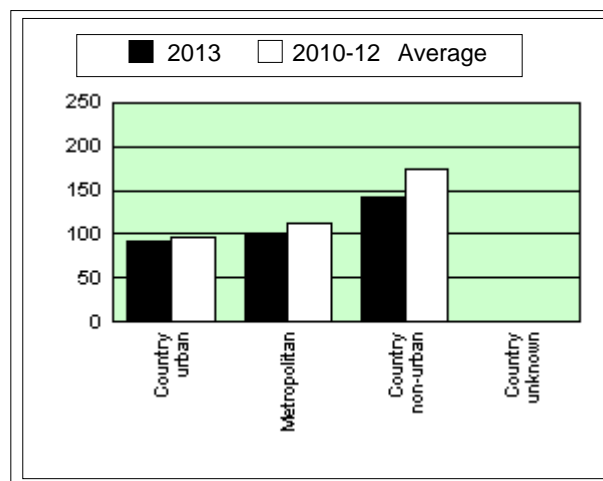
Age	2013	2010-12 Average	% Change
0-4	1	4.0	-75.0%
5-16	11	17.7	-37.7%
17-20	32	44.3	-27.8%
21-25	40	44.7	-10.4%
26-29	25	27.3	-8.5%
30-39	43	50.0	-14.0%
40-49	39	47.3	-17.6%
50-59	48	53.0	-9.4%
60-69	38	36.3	4.6%
70+	56	60.7	-7.7%
Unknown	1	0.7	N/A
Total	334	386.0	-13.5%



¹ The categories motorcyclist and pedal cyclist include passengers.

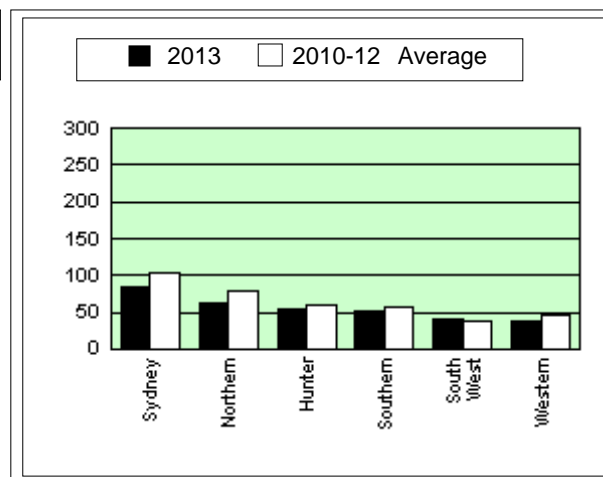
3.1.4 Number of fatalities for 12 months ending September 2013, urbanisation

Urbanisation	2013	2010-12 Average	% Change
Country urban	91	97.3	-6.5%
Metropolitan	100	113.0	-11.5%
Country non-urban	143	175.0	-18.3%
Country unknown	0	0.7	N/A
Total	334	386.0	-13.5%



3.1.5 Number of fatalities for 12 months ending September 2013, RMS Region

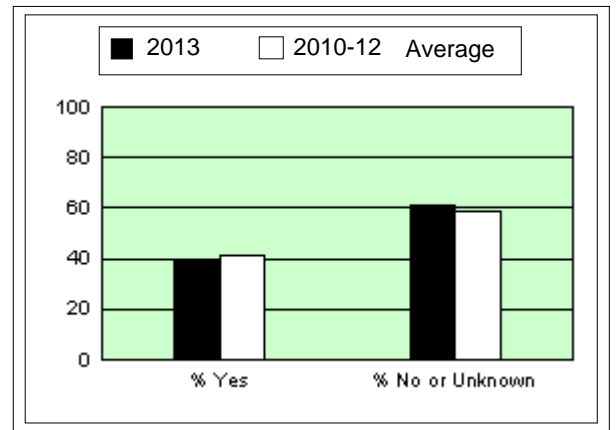
RMS Region	2013	2010-12 Average	% Change
Sydney	84	104.3	-19.5%
Northern	64	78.0	-17.9%
Hunter	54	61.3	-12.0%
Southern	53	56.3	-5.9%
South West	41	39.3	4.2%
Western	38	46.7	-18.6%
Total	334	386.0	-13.5%



3.2 FACTORS INVOLVED IN FATAL CRASHES

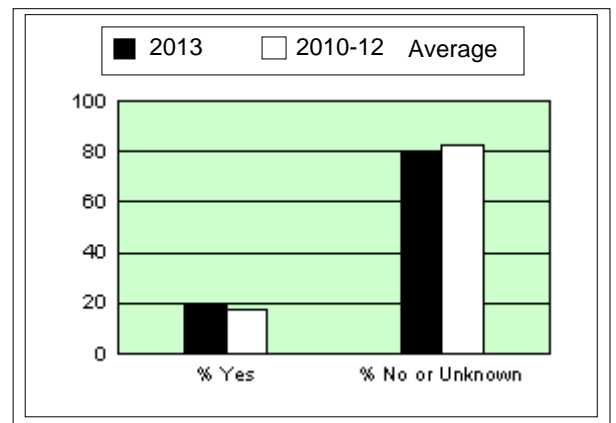
3.2.1 Number of fatal crashes for 12 months ending September 2013, speeding involvement

Excessive Speed ?	2013	2010-12 Average	% Change
Yes	123	144.3	-14.8%
% Yes	39.2%	41.2%	
No or Unknown	191	206.0	-7.3%
% No or Unknown	60.8%	58.8%	
Total	314	350.3	-10.4%



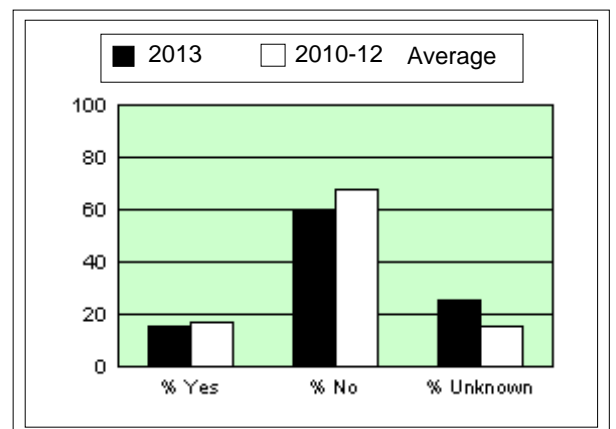
3.2.2 Number of fatal crashes for 12 months ending September 2013, fatigue involvement

Fatigue ?	2013	2010-12 Average	% Change
Yes	63	60.7	3.8%
% Yes	20.1%	17.3%	
No or Unknown	251	289.7	-13.3%
% No or Unknown	79.9%	82.7%	
Total	314	350.3	-10.4%



3.2.3 Number of fatal crashes for 12 months ending September 2013, alcohol involvement

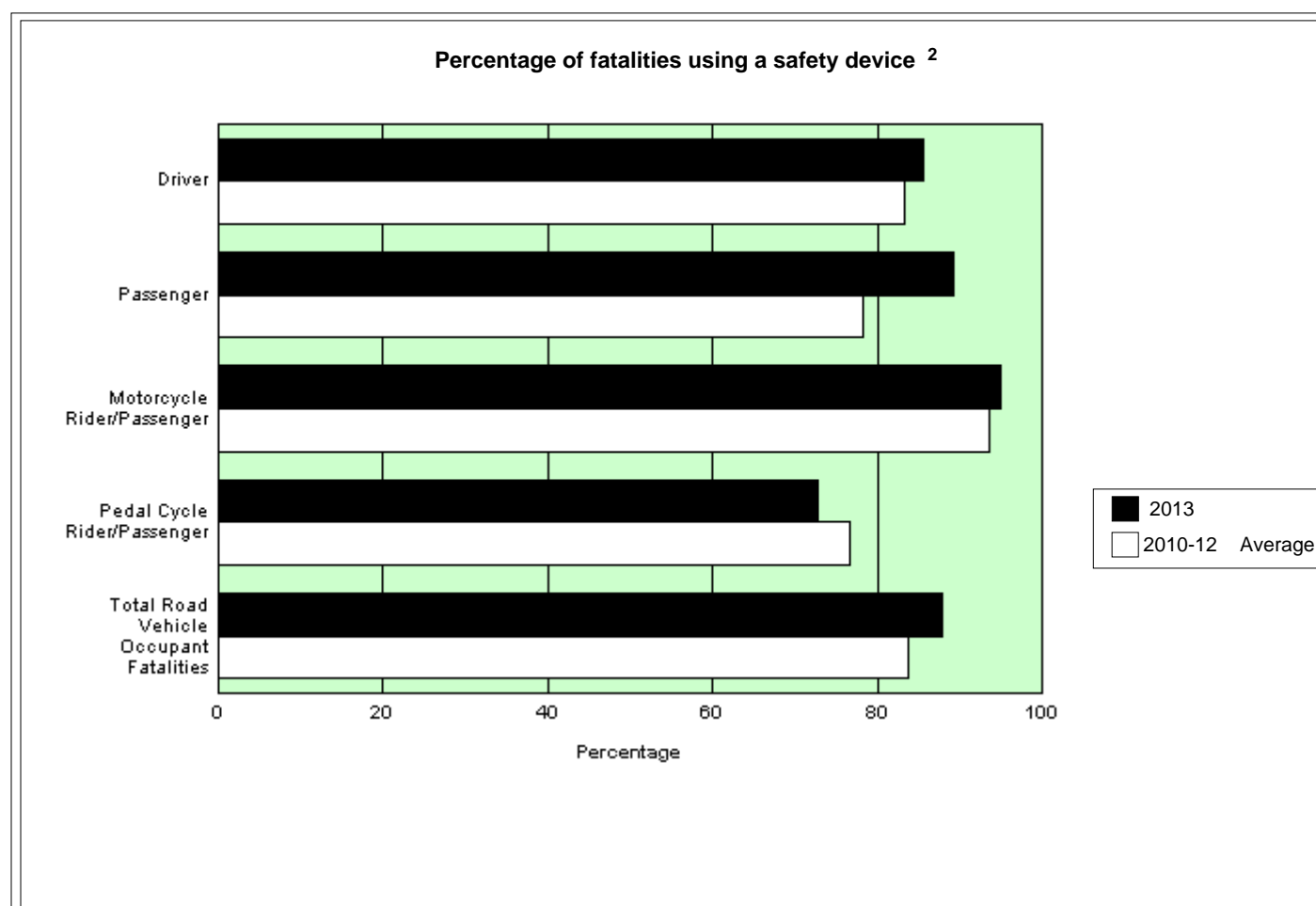
Alcohol ?	2013	2010-12 Average	% Change
Yes	48	59.7	-19.6%
% Yes	15.3%	17.0%	
No	187	237.7	-21.3%
% No	59.6%	67.8%	
Unknown	79	53.0	49.1%
% Unknown	25.2%	15.1%	
Total	314	350.3	-10.4%



3.3 SAFETY DEVICE USAGE OF FATALITIES

3.3.1 Number of road vehicle fatalities for 12 months ending September 2013, safety device usage, road user class

Safety Device?	Driver		Passenger		Motorcycle Rider/Passenger		Pedal Cycle Rider/Passenger		Total Road Vehicle Occupant Fatalities ¹	
	2013	2010-12 Average	2013	2010-12 Average	2013	2010-12 Average	2013	2010-12 Average	2013	2010-12 Average
	Unknown	34	31.0	10	15.7	0	2.3	1	0.0	45
Worn	113	122.7	41	53.7	57	52.7	8	7.7	219	236.7
Not Worn	19	24.7	5	15.0	3	3.7	3	2.3	30	45.7
Total	166	178.3	56	84.3	60	58.7	12	10.0	294	331.3



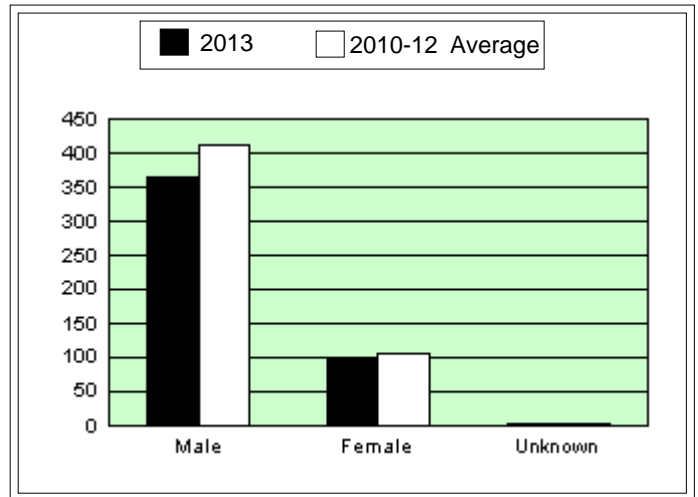
¹ Includes fatalities of other or unknown road user class.

² Excludes cases of unknown safety device usage

3.4 MOTOR VEHICLE CONTROLLERS INVOLVED IN FATAL CRASHES

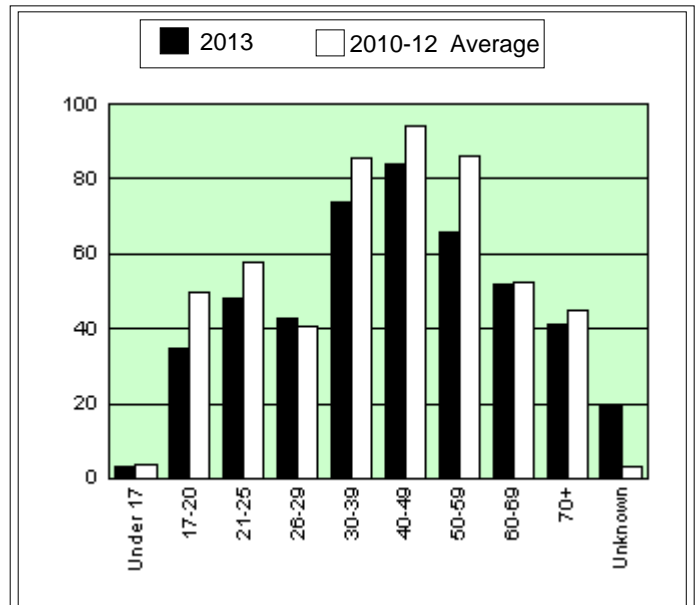
3.4.1 Number of motor vehicle controllers involved in fatal crashes for 12 months ending September 2013, sex of controller

Sex	2013	2010-12 Average	% Change
Male	365	411.7	-11.3%
Female	97	105.0	-7.6%
Unknown	4	2.3	71.4%
Total	466	519.0	-10.2%



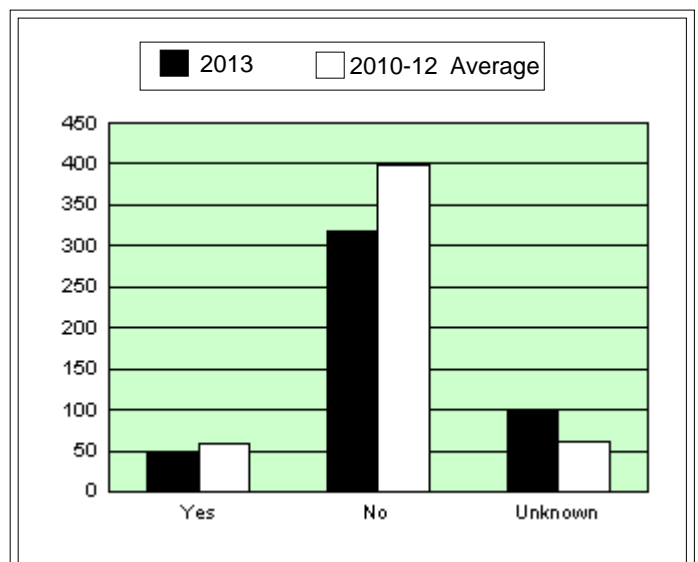
3.4.2 Number of motor vehicle controllers involved in fatal crashes for 12 months ending September 2013, age of controller

Age	2013	2010-12 Average	% Change
Under 17	3	3.7	-18.2%
17-20	35	49.7	-29.5%
21-25	48	58.0	-17.2%
26-29	43	40.7	5.7%
30-39	74	85.7	-13.6%
40-49	84	94.3	-11.0%
50-59	66	86.3	-23.6%
60-69	52	52.3	-0.6%
70+	41	45.0	-8.9%
Unknown	20	3.3	500.0%
Total	466	519.0	-10.2%



3.4.3 Number of motor vehicle controllers involved in fatal crashes for 12 months ending September 2013, alcohol involvement

Alcohol Involvement	2013	2010-12 Average	% Change
Yes	48	59.7	-19.6%
No	318	397.7	-20.0%
Unknown	100	61.7	62.2%
Total	466	519.0	-10.2%



3.5 CASUALTIES - OVERALL TREND

Casualty figures presented in this section are based on preliminary data supplied by the NSW Police from the Computerised Operational Policing System (COPS) database.

RMS Region figures are estimates based on combinations of NSW Police Local Area Commands. These combinations do not correspond exactly to RMS Region boundaries.

3.5.1 Twelve months comparison

RMS Region	12 Months ending Aug, 2013	12 Months ending Aug, 2012	% Change
Sydney	10,390	11,114	-6.5%
Northern	2,044	2,152	-5.0%
Hunter	2,806	3,234	-13.2%
Southern	2,244	2,301	-2.5%
South West	871	901	-3.3%
Western	1,264	1,351	-6.4%
Total	19,619	21,053	-6.8%

3.5.2 Year-to-date comparison

RMS Region	Jan to Aug, 2013	Jan to Aug, 2012	% Change
Sydney	6,886	7,383	-6.7%
Northern	1,330	1,444	-7.9%
Hunter	1,839	2,075	-11.4%
Southern	1,499	1,590	-5.7%
South West	563	605	-6.9%
Western	829	872	-4.9%
Total	12,946	13,969	-7.3%