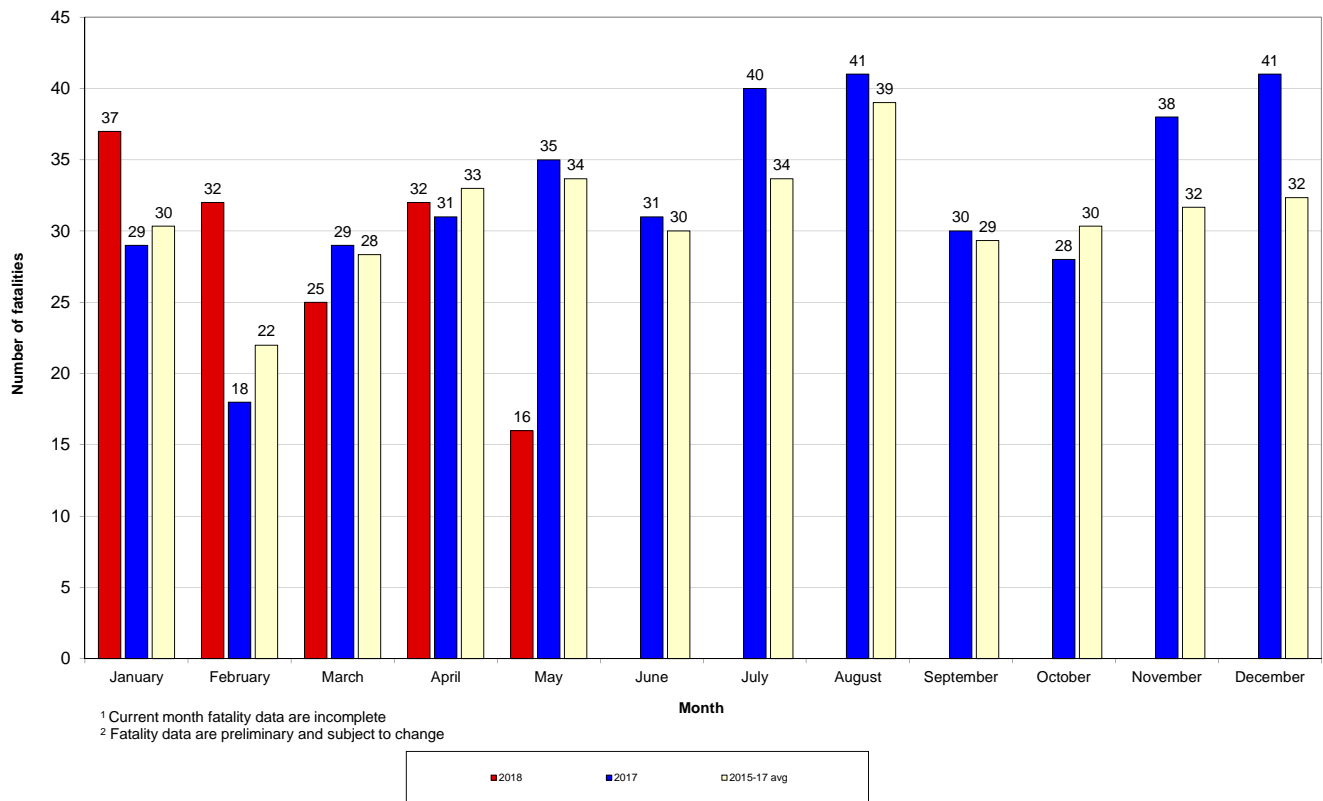


	2018	2017	+/-	% change
Calendar year to date	142	131	11	8%
May to date	16	24	-8	-33%
12-month period to date	402	352	50	14%

Fatalities 12-month moving total - 2013 to date



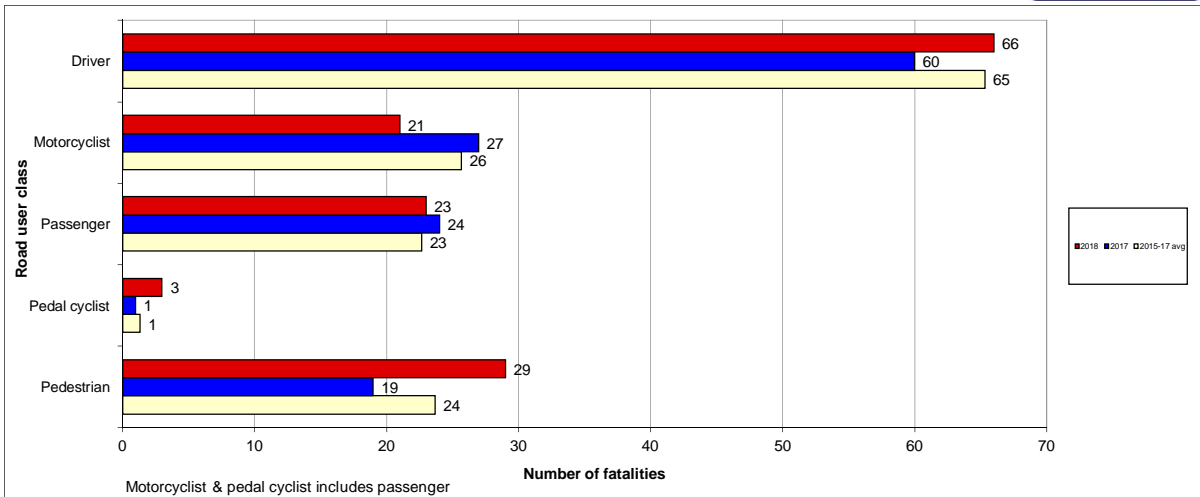
Road fatality comparative statistics by month<sup>1</sup> for 2017<sup>2</sup>, 2018<sup>2</sup> and the average for the 3-year period 2015-2017<sup>2</sup>



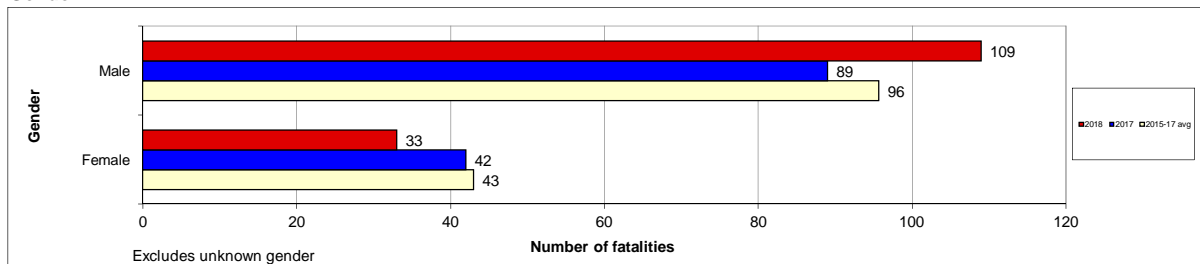
Preliminary Data - Note: Fatalities will be removed from statistics if subsequent Police or Coronial investigation shows that they did not fall within National reporting guidelines. Fatalities will be added from a crash occurring prior to today's date where a person subsequently dies within 30 days or the crash is reported late. Fatalities are deaths which occurred within 30 days of a crash as a result of injuries received in the crash. The crash must have occurred within the surveyed road reserve.

Road fatality comparative statistics for the period 01 January to 24 May 2017<sup>2</sup>, 2018<sup>2</sup> and the average for the same period in 2015, 2016 and 2017<sup>2</sup>

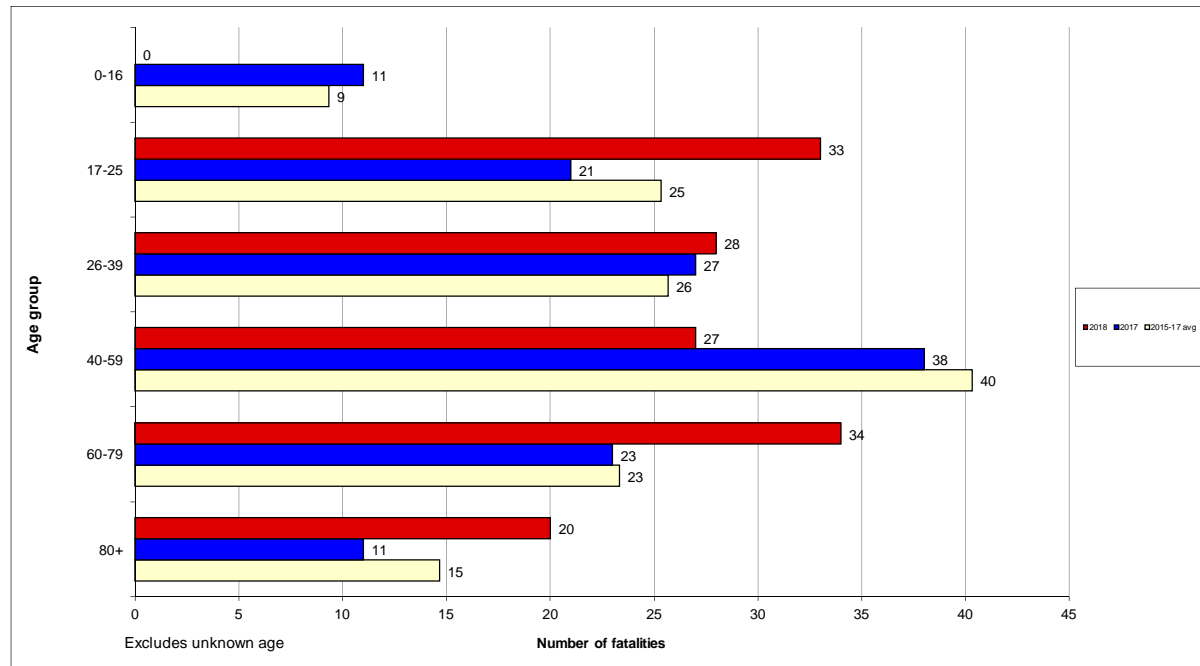
Road user class



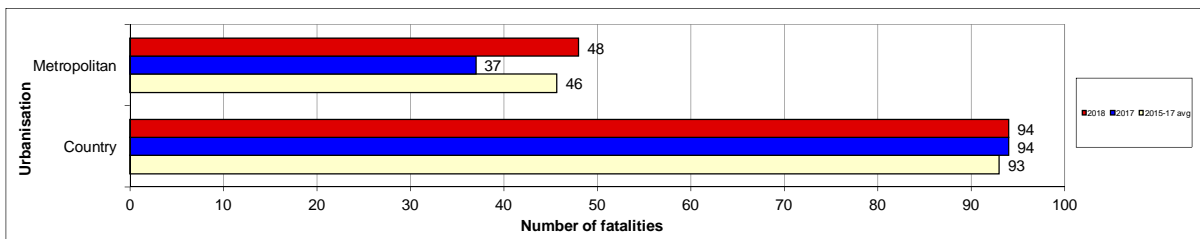
Gender



Age group



Urbanisation



<sup>2</sup> Fatality data are preliminary and subject to change

Road fatality comparative statistics for the period 01 January to 24 May 2017<sup>2</sup>, 2018<sup>2</sup>  
and the average for the same period in 2015, 2016 and 2017<sup>2</sup>

**Road user class**

	2018	2017	+/-	% change	3-year average
Driver	66	60	6	10%	65.3
Motorcyclist	21	27	-6	-22%	25.7
Passenger	23	24	-1	-4%	22.7
Pedal cyclist	3	1	2	200%	1.3
Pedestrian	29	19	10	53%	23.7

Motorcyclist & pedal cyclist includes passenger

**Gender**

	2018	2017	+/-	% change	3-year average
Male	109	89	20	22%	95.7
Female	33	42	-9	-21%	43.0

Excludes unknown gender

**Age group**

	2018	2017	+/-	% change	3-year average
0-16	0	11	-11	-100%	9.3
17-25	33	21	12	57%	25.3
26-39	28	27	1	4%	25.7
40-59	27	38	-11	-29%	40.3
60-79	34	23	11	48%	23.3
80+	20	11	9	82%	14.7

Excludes unknown age

**Urbanisation**

	2018	2017	+/-	% change	3-year average
Metropolitan	48	37	11	30%	45.7
Country	94	94	0	0%	93.0

<sup>2</sup> Fatality data are preliminary and subject to change

# Road Toll Update for NSW

up to and including  
Thursday, 24 May 2018

**Fatalities advised since last update issued: 0**  
**Fatalities excluded since last update issued: 0**

	CALENDAR YEAR TO MIDNIGHT 24 May					12-MONTH PERIOD ENDING 24 May				
	2018 (Prelim)	2017 (Prelim)	DIFF.	3-YEAR AVERAGE	DIFF.	2018 (Prelim)	2017 (Prelim)	DIFF.	3-YEAR AVERAGE	DIFF.
<b>Fatal crashes</b>	<b>132</b>	<b>120</b>	<b>12</b>	<b>129</b>	<b>3</b>	<b>365</b>	<b>327</b>	<b>38</b>	<b>321</b>	<b>44</b>
<b>Fatalities</b>										
Driver	66	60	6	65	1	195	162	33	162	33
Passenger	23	24	-1	23	0	82	55	27	56	26
Motorcyclist*	21	27	-6	26	-5	53	68	-15	66	-13
Pedestrian	29	19	10	24	5	63	62	1	57	6
Pedal cyclist*	3	1	2	1	2	9	5	4	6	3
Other	0	0	0	0	0	0	0	0	0	0
<b>TOTAL KILLED</b>	<b>142</b>	<b>131</b>	<b>11</b>	<b>139</b>	<b>3</b>	<b>402</b>	<b>352</b>	<b>50</b>	<b>346</b>	<b>56</b>

\* Includes passengers

<b>PRELIMINARY 2017 TOTALS:</b>	<b>Fatal crashes 353</b>	<b>Fatalities 391</b>
---------------------------------	--------------------------	-----------------------

Preliminary Data -Note: Fatalities will be removed from statistics if subsequent Police or Coronial investigation shows that they did not fall within National reporting guidelines. Fatalities will be added from a crash occurring prior to today's date where a person subsequently dies within 30 days or the crash is reported late. Typically, these variations may result in a statewide annual decrease of up to 12 fatalities from the initial preliminary figure.

[Click here](#) for more information about traffic crash statistics

[Click here](#) for more information about the Centre for Road Safety