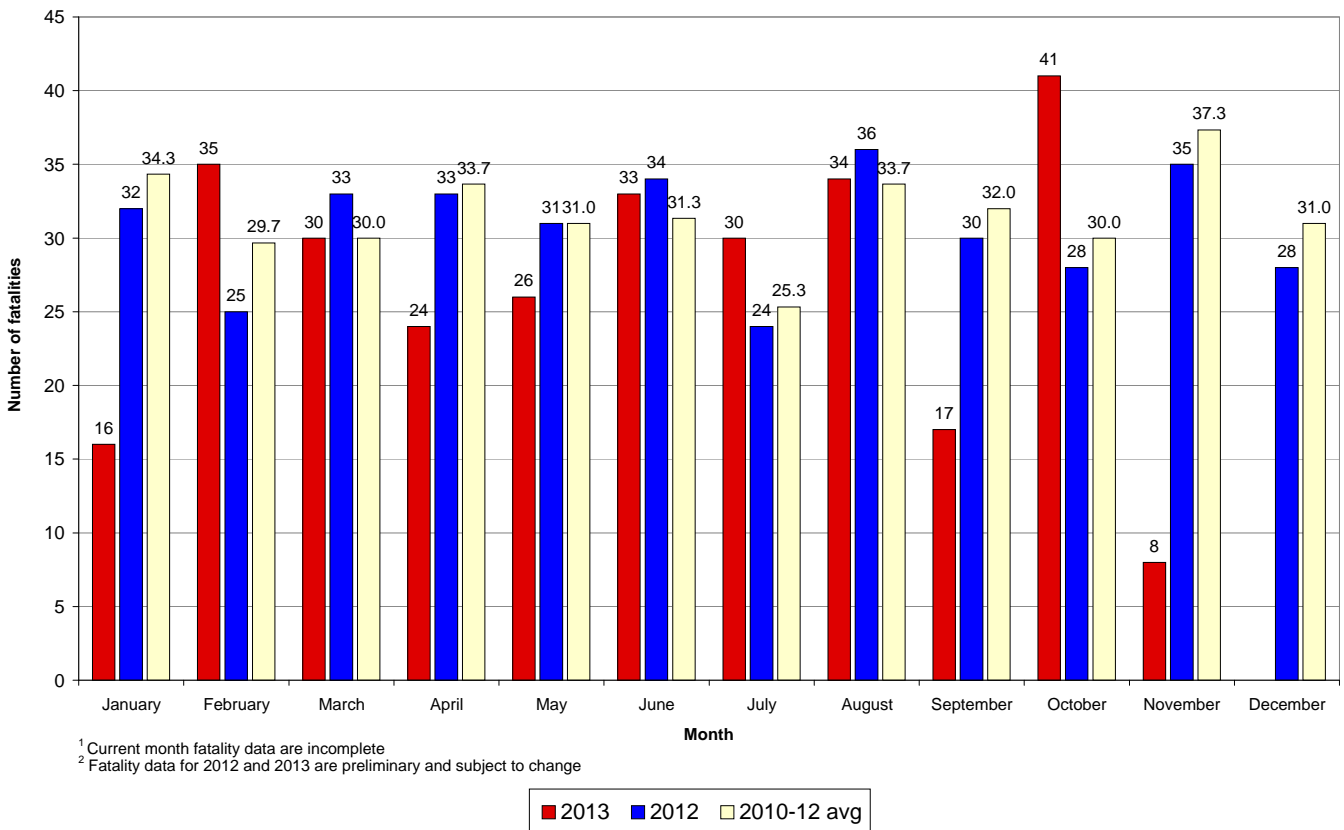


	2013	2012	+/-	% change
Calendar year to date	294	306	-12	-4%
November to date	8	0	8	N/A
12-month period to date	357	383	-26	-7%

Fatalities 12-month moving total - 2008 to date



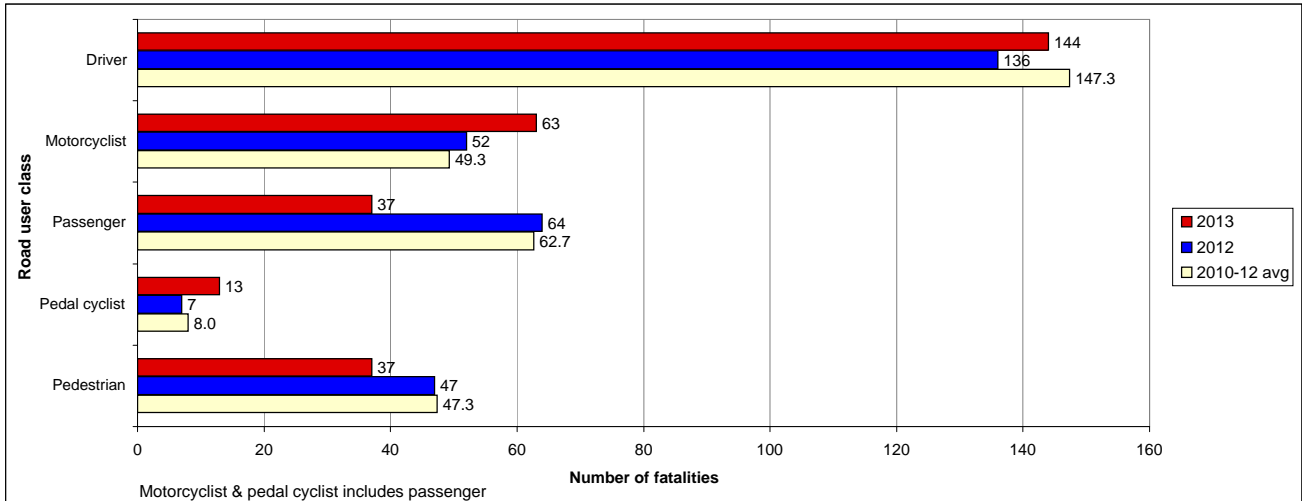
Road fatality comparative statistics by month¹ for 2012², 2013² and the average for the 3-year period 2010-2012²



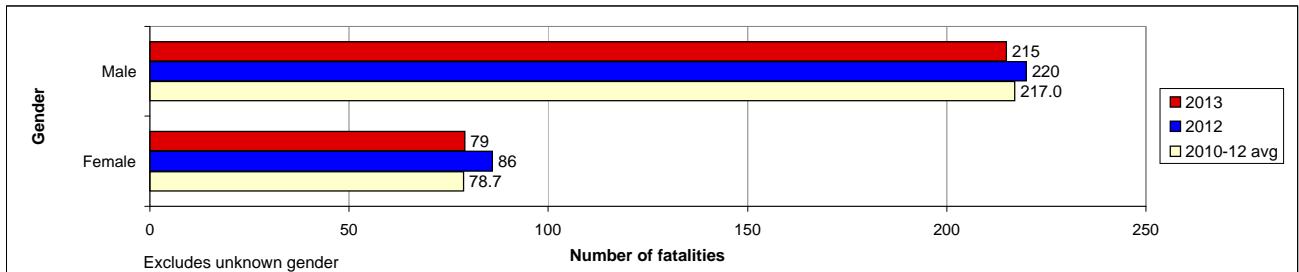
Preliminary Data - Note: Fatalities will be removed from statistics if subsequent Police or Coronial investigation shows that they did not fall within National reporting guidelines. Fatalities will be added from a crash occurring prior to today's date where a person subsequently dies within 30 days or the crash is reported late. Fatalities are deaths which occurred within 30 days of a crash as a result of injuries received in the crash. The crash must have occurred within the surveyed road reserve.

Road fatality comparative statistics for the period 1 January to 04 November 2012, 2013 and the average for the same period in 2010, 2011 and 2012

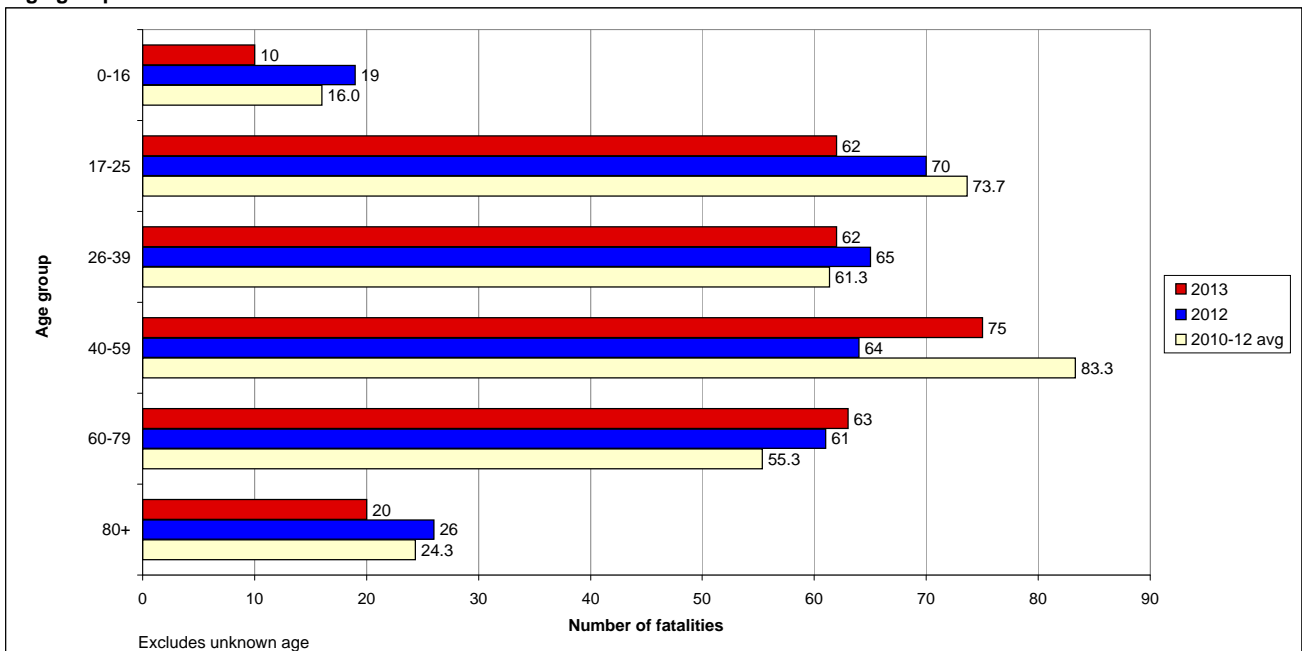
Road user class



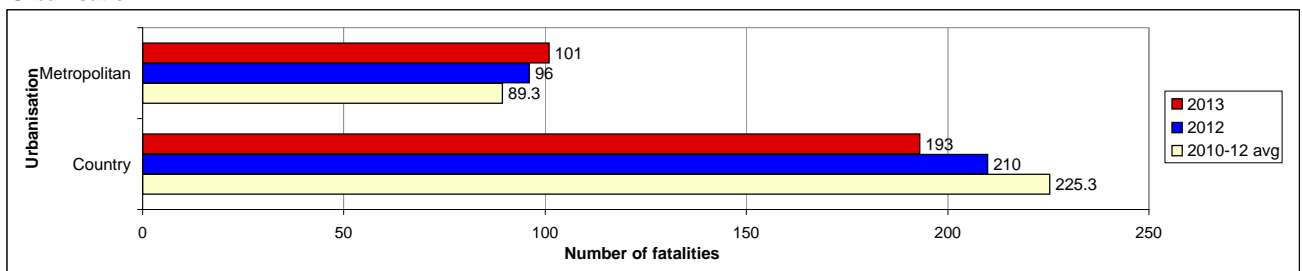
Gender



Age group



Urbanisation



Road fatality comparative statistics for the period 1 January to 04 November 2012, 2013 and the average for the same period in 2010, 2011 and 2012

Road user class

	2013	2012	+/-	% change	3-year average
Driver	144	136	8	6%	147.3
Motorcyclist	63	52	11	21%	49.3
Passenger	37	64	-27	-42%	62.7
Pedal cyclist	13	7	6	86%	8.0
Pedestrian	37	47	-10	-21%	47.3

Motorcyclist & pedal cyclist includes passenger

Gender

	2013	2012	+/-	% change	3-year average
Male	215	220	-5	-2%	217.0
Female	79	86	-7	-8%	78.7

Excludes unknown gender

Age group

	2013	2012	+/-	% change	3-year average
0-16	10	19	-9	-47%	16.0
17-25	62	70	-8	-11%	73.7
26-39	62	65	-3	-5%	61.3
40-59	75	64	11	17%	83.3
60-79	63	61	2	3%	55.3
80+	20	26	-6	-23%	24.3

Excludes unknown age

Urbanisation

	2013	2012	+/-	% change	3-year average
Metropolitan	101	96	5	5%	89.3
Country	193	210	-17	-8%	225.3

Road Toll Update for NSW

up to and including
Monday, 04 November 2013

Fatalities advised since last update issued: 2

Fatalities excluded since last update issued: 0

	CALENDAR YEAR TO MIDNIGHT 04 November					12-MONTH PERIOD ENDING 04 November				
	2013 (Prelim)	2012 (Final)	DIFF.	3-YEAR AVERAGE	DIFF.	2013 (Prelim)	2012 (Final)	DIFF.	3-YEAR AVERAGE	DIFF.
Fatal crashes	278	281	-3	287	-9	333	353	-20	345	-12
Fatalities										
Driver	144	136	8	147	-3	172	171	1	175	-3
Passenger	37	64	-27	63	-26	55	87	-32	84	-29
Motorcyclist*	63	52	11	49	14	72	61	11	57	15
Pedestrian	37	47	-10	47	-10	45	56	-11	54	-9
Pedal cyclist*	13	7	6	8	5	13	8	5	9	4
Other	0	0	0	0	0	0	0	0	0	0
TOTAL KILLED	294	306	-12	315	-21	357	383	-26	380	-23

* Includes passengers

FINAL 2012 TOTALS: Fatal crashes 336 Fatalities 369

Preliminary Data -Note: Fatalities will be removed from statistics if subsequent Police or Coronial investigation shows that they did not fall within National reporting guidelines. Fatalities will be added from a crash occurring prior to today's date where a person subsequently dies within 30 days or the crash is reported late. Typically, these variations may result in a statewide annual decrease of up to 12 fatalities from the initial preliminary figure.

[Click here](#) for monthly crash statistics

[Click here](#) for more information about traffic crash statistics

[Click here](#) for more information about the Centre for Road Safety