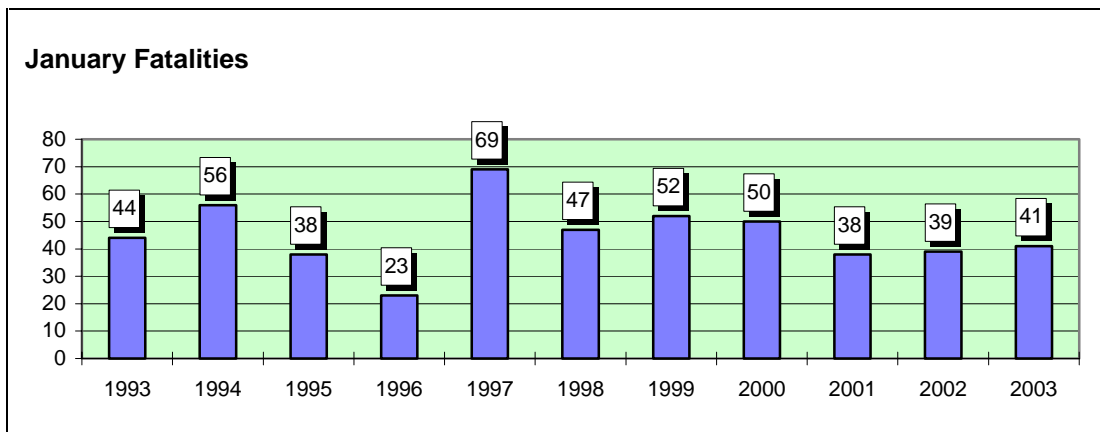




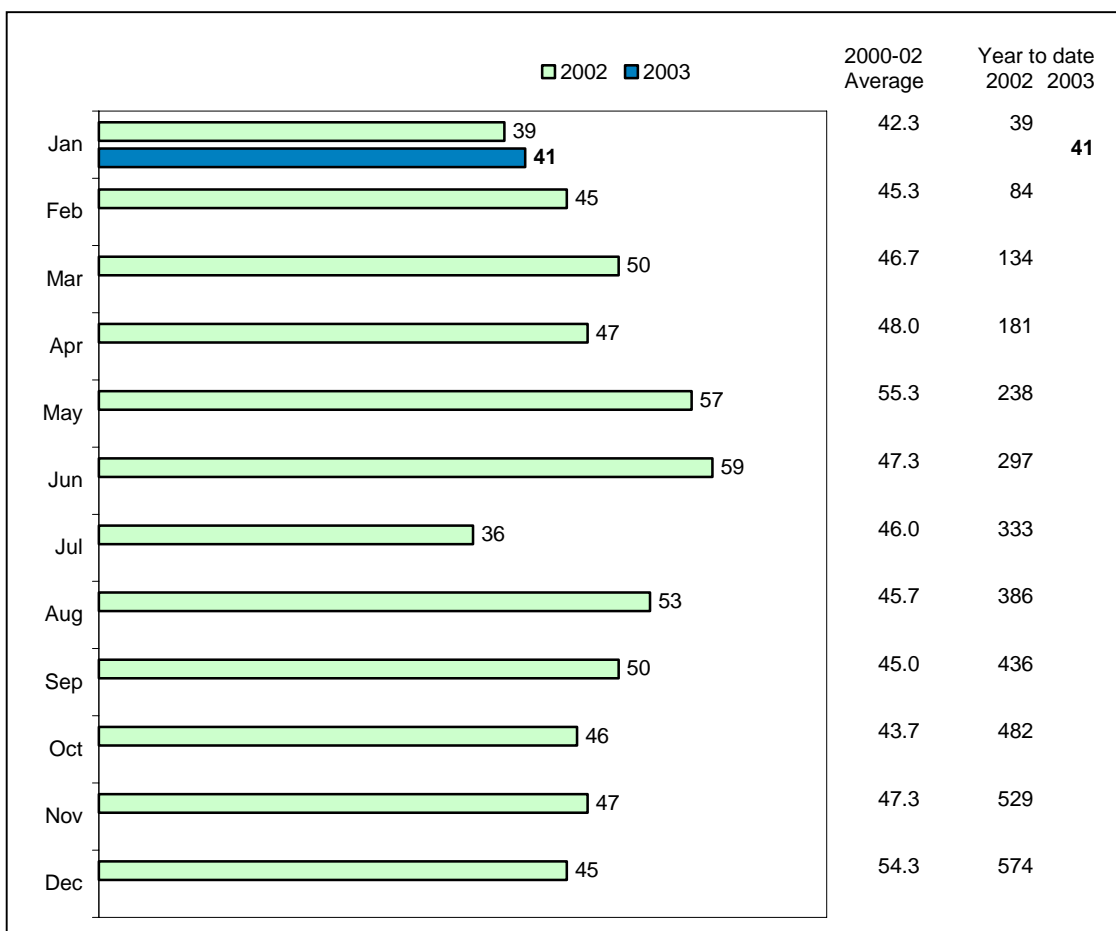
## PRELIMINARY TRAFFIC ACCIDENT DATA

**MONTHLY BULLETIN**  
**JANUARY 2003**

NSW road fatalities for January: 1993 - 2003



NSW road fatalities: monthly comparison



### This month's key points

- There were 41 fatalities recorded on NSW roads in January 2003, which is 2 (5%) more than for January 2002.
- The main increases in fatalities for January, compared with January 2002, were:
  - on State Highways (up from 10 to 17)
  - amongst motorcyclists (up from 1 to 6)
- The preliminary fatality total for 2002 is now 574. This is 50 (10%) more than the total for 2001.

# TABLE OF CONTENTS

<b>TABLE OF CONTENTS</b> .....	<b>1</b>
<b>SECTION 1: MONTHLY STATISTICS</b> .....	<b>1</b>
1.1 FATALITIES .....	1
1.2 FATAL ACCIDENTS .....	2
1.3 COMPARISON WITH OTHER STATES .....	3
1.3.1 Fatalities.....	3
1.3.2 Fatal Accidents.....	3
<b>SECTION 2: RATES AND INDICATORS</b> .....	<b>4</b>
2.1 FATALITY RATES FOR 12-MONTH PERIOD ENDING JANUARY 2003 .....	4
<b>SECTION 3: TRENDS</b> .....	<b>5</b>
3.1 FATALITIES - OVERALL TREND.....	5
3.1.1 Number of fatalities for 12 months ending January 2003, road user class .....	5
3.1.2 Number of fatalities for 12 months ending January 2003, sex of fatality .....	5
3.1.3 Number of fatalities for 12 months ending January 2003, age of fatality .....	6
3.1.4 Number of fatalities for 12 months ending January 2003, urbanisation .....	7
3.1.5 Number of fatalities for 12 months ending January 2003, RTA Region .....	7
3.2 FACTORS INVOLVED IN FATAL ACCIDENTS .....	8
3.2.1 Number of fatal accidents for 12 months ending January 2003, speeding involvement.....	8
3.2.2 Number of fatal accidents for 12 months ending January 2003, fatigue involvement.....	8
3.2.3 Number of fatal accidents for 12 months ending November 2002, alcohol involvement.....	8
3.3 SAFETY DEVICE USAGE OF FATALITIES .....	9
3.3.1 Number of road vehicle fatalities for 12 months ending January 2003, safety device usage, road user class.....	9
3.4 MOTOR VEHICLE CONTROLLERS INVOLVED IN FATAL ACCIDENTS .....	10
3.4.1 Number of motor vehicle controllers involved in fatal accidents for 12 months ending January 2003, sex of controller.....	10
3.4.2 Number of motor vehicle controllers involved in fatal accidents for 12 months ending January 2003, age of controller.....	10
3.4.3 Number of motor vehicle controllers involved in fatal accidents for 12 months ending November 2002, alcohol involvement.....	10
3.5 CASUALTIES - OVERALL TREND .....	11
3.5.1 Twelve months comparison.....	11
3.5.2 Year-to-date comparison .....	11
<b>SECTION 4: OVERVIEW OF ROAD TOLL FOR THE 2002/03 CHRISTMAS/NEW YEAR HOLIDAY PERIOD ....</b>	<b>13</b>
<b>SECTION 5: OVERVIEW OF ROAD TOLL FOR THE AUSTRALIA DAY HOLIDAY WEEKEND 2003 .....</b>	<b>15</b>

## Explanatory Notes

- Data are preliminary and are compiled on the first working day of the month.
- Casualty figures reported in Section 3.5 are based on preliminary data supplied by the NSW Police Service. They are comprised of all casualties, including fatalities.
- Vehicle kilometres travelled are estimates based on changes in fuel consumption since the Australian Bureau of Statistics Survey of Motor Vehicle Use.

## SECTION 1: MONTHLY STATISTICS

### 1.1 FATALITIES

	Jan 2003	Jan 2002	Differ- ence	Year to date 2003	Year to date 2002	Differ- ence
<b>Road User Class</b>						
Driver	19	22	-3	19	22	-3
Passenger	12	10	2	12	10	2
Pedestrian	3	5	-2	3	5	-2
Motorcyclist <sup>1</sup>	6	1	5	6	1	5
Pedal cyclist <sup>1</sup>	1	1	0	1	1	0
Other	0	0	0	0	0	0
<b>Total</b>	<b>41</b>	<b>39</b>	<b>2</b>	<b>41</b>	<b>39</b>	<b>2</b>
<b>Age (years)</b>						
0-4	0	0	0	0	0	0
5-16	0	2	-2	0	2	-2
17-20	6	7	-1	6	7	-1
21-25	8	4	4	8	4	4
26-29	3	5	-2	3	5	-2
30-39	3	6	-3	3	6	-3
40-49	8	6	2	8	6	2
50-59	5	2	3	5	2	3
60-69	0	4	-4	0	4	-4
70+	7	3	4	7	3	4
Unknown	1	0	1	1	0	1
<b>Total</b>	<b>41</b>	<b>39</b>	<b>2</b>	<b>41</b>	<b>39</b>	<b>2</b>
<b>Sex</b>						
Male	32	28	4	32	28	4
Female	9	11	-2	9	11	-2
<b>Total</b> <sup>2</sup>	<b>41</b>	<b>39</b>	<b>2</b>	<b>41</b>	<b>39</b>	<b>2</b>
<b>RTA Region</b>						
Sydney	11	9	2	11	9	2
Northern	6	7	-1	6	7	-1
Hunter	9	8	1	9	8	1
Southern	8	7	1	8	7	1
South Western	2	5	-3	2	5	-3
Western	5	3	2	5	3	2
<b>Total</b>	<b>41</b>	<b>39</b>	<b>2</b>	<b>41</b>	<b>39</b>	<b>2</b>
<b>Road Classification</b>						
Freeway/Motorway	0	3	-3	0	3	-3
State Highway	17	10	7	17	10	7
Other Classified Road <sup>3</sup>	10	10	0	10	10	0
Unclassified road	14	16	-2	14	16	-2
<b>Total</b>	<b>41</b>	<b>39</b>	<b>2</b>	<b>41</b>	<b>39</b>	<b>2</b>

<sup>1</sup> Includes passengers

<sup>2</sup> Includes unknown sex

<sup>3</sup> Includes Main Road, Secondary Road and Tourist Road

## 1.2 FATAL ACCIDENTS

	Jan 2003	Jan 2002	Differ- ence	Year to date 2003	Year to date 2002	Differ- ence
<b>Urbanisation</b>						
Sydney Metropolitan Area	11	7	4	11	7	4
Newcastle Metropolitan Area	1	2	-1	1	2	-1
Wollongong Metropolitan Area	0	1	-1	0	1	-1
Country urban (speed limit ≤80km/h)	6	12	-6	6	12	-6
Country non-urban (speed limit >80km/h)	18	14	4	18	14	4
Country unknown (speed limit unknown)	0	0	0	0	0	0
<b>Total</b>	<b>36</b>	<b>36</b>	<b>0</b>	<b>36</b>	<b>36</b>	<b>0</b>
<b>Location Type</b>						
Intersection	7	6	1	7	6	1
Non-Intersection	29	30	-1	29	30	-1
<b>Total</b>	<b>36</b>	<b>36</b>	<b>0</b>	<b>36</b>	<b>36</b>	<b>0</b>
<b>Route</b>						
Princes Highway	2	0	2	2	0	2
Hume Highway	0	0	0	0	0	0
Great Western Highway	2	1	1	2	1	1
New England Highway	1	0	1	1	0	1
Pacific Highway	3	2	1	3	2	1
Newell Highway	0	1	-1	0	1	-1
All other routes	28	32	-4	28	32	-4
<b>Total</b>	<b>36</b>	<b>36</b>	<b>0</b>	<b>36</b>	<b>36</b>	<b>0</b>
<b>Road Classification</b>						
Freeway/Motorway	0	3	-3	0	3	-3
State Highway	12	8	4	12	8	4
Other Classified road <sup>1</sup>	10	10	0	10	10	0
Unclassified road	14	15	-1	14	15	-1
<b>Total</b>	<b>36</b>	<b>36</b>	<b>0</b>	<b>36</b>	<b>36</b>	<b>0</b>
<b>RTA Region</b>						
Sydney	11	9	2	11	9	2
Northern	6	6	0	6	6	0
Hunter	8	8	0	8	8	0
Southern	7	7	0	7	7	0
South Western	2	3	-1	2	3	-1
Western	2	3	-1	2	3	-1
<b>Total</b>	<b>36</b>	<b>36</b>	<b>0</b>	<b>36</b>	<b>36</b>	<b>0</b>
<b>Type of Accident</b>						
Car accident	30	30	0	30	30	0
Light truck accident	2	5	-3	2	5	-3
Heavy truck accident	3	6	-3	3	6	-3
Heavy rigid truck accident	1	3	-2	1	3	-2
Articulated truck accident	2	3	-1	2	3	-1
Bus accident	1	0	1	1	0	1
Motorcycle accident	6	1	5	6	1	5
<b>All fatal accidents <sup>2</sup></b>	<b>36</b>	<b>36</b>	<b>0</b>	<b>36</b>	<b>36</b>	<b>0</b>

<sup>1</sup> Includes Main Road, Secondary Road and Tourist Road

<sup>2</sup> The type of accident categories are not mutually exclusive and must not be added together.

### 1.3 COMPARISON WITH OTHER STATES

Please note that data included in this section represent statistics for the previous month<sup>1</sup>.

#### 1.3.1 Fatalities

	Dec 2002	Dec 2001	Differ- ence	Year to date 2002	Year to date 2001	Differ- ence
<b>State/Territory</b>						
New South Wales	45	50	-5	574	524	50
Victoria	38	37	1	398	444	-46
Queensland	23	27	-4	321	324	-3
South Australia	21	12	9	154	153	1
Western Australia	9	11	-2	180	165	15
Tasmania	1	0	1	35	61	-26
Northern Territory	5	8	-3	55	50	5
Australian Capital Territory	0	3	-3	10	16	-6
<b>Total</b>	<b>142</b>	<b>148</b>	<b>-6</b>	<b>1,727</b>	<b>1,737</b>	<b>-10</b>

#### 1.3.2 Fatal Accidents

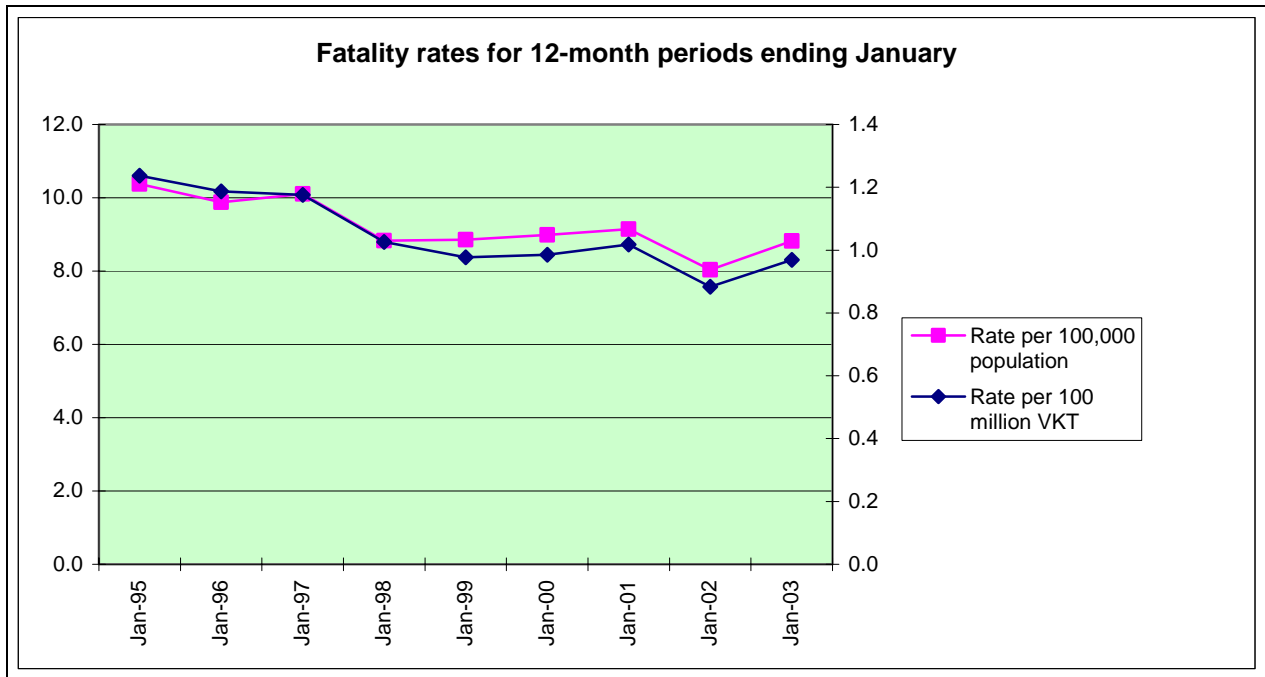
	Dec 2002	Dec 2001	Differ- ence	Year to date 2002	Year to date 2001	Differ- ence
<b>State/Territory</b>						
New South Wales	41	48	-7	513	486	27
Victoria	31	33	-2	362	404	-42
Queensland	19	24	-5	282	296	-14
South Australia	18	12	6	138	137	1
Western Australia	8	11	-3	160	151	9
Tasmania	1	0	1	33	52	-19
Northern Territory	4	6	-2	40	43	-3
Australian Capital Territory	0	2	-2	8	15	-7
<b>Total</b>	<b>122</b>	<b>136</b>	<b>-14</b>	<b>1,536</b>	<b>1,584</b>	<b>-48</b>

<sup>1</sup> Source: Australian Transport Safety Bureau

## SECTION 2: RATES AND INDICATORS

### 2.1 FATALITY RATES FOR 12-MONTH PERIOD ENDING JANUARY 2003

Number	576
Rate per 100,000 population <sup>1</sup>	8.8
Rate per 100 million vehicle kilometres travelled (VKT) <sup>2</sup>	1.0

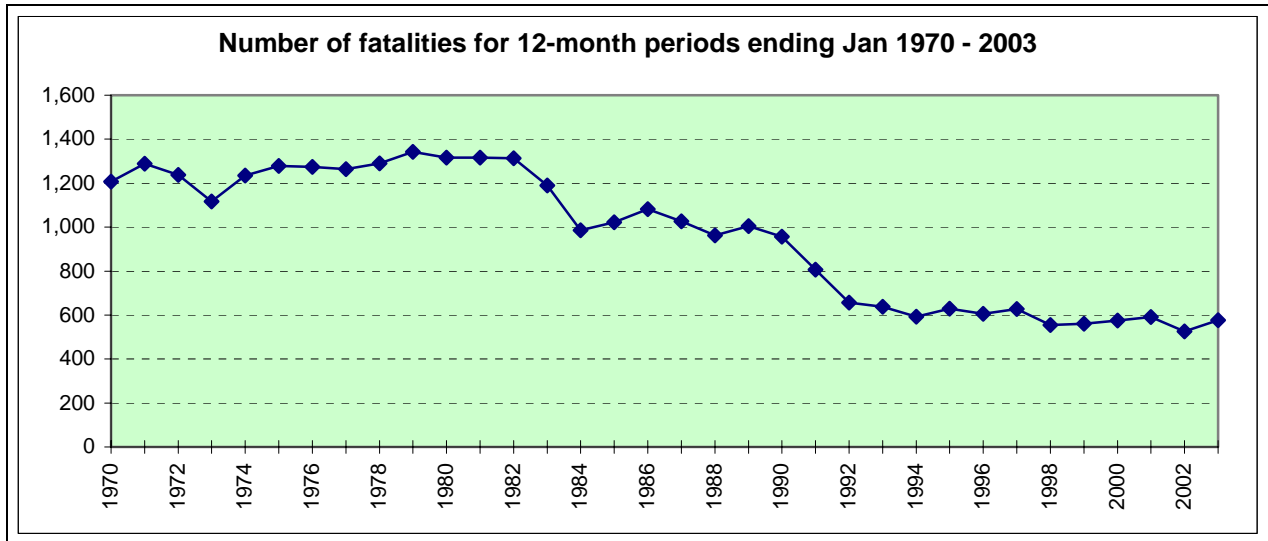


<sup>1</sup> Based on preliminary estimated resident population data

<sup>2</sup> Estimates based on changes in fuel consumption since the Australian Bureau of Statistics Survey of Motor Vehicle Use  
*RTA Monthly Bulletin of Preliminary Traffic Accident Data for January 2003*

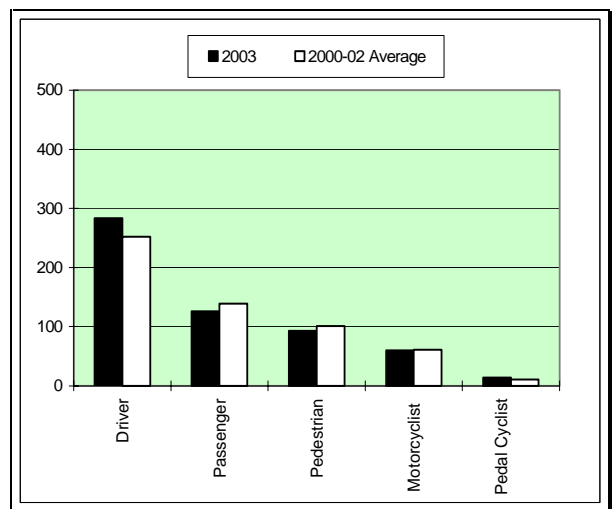
## SECTION 3: TRENDS

### 3.1 FATALITIES - OVERALL TREND



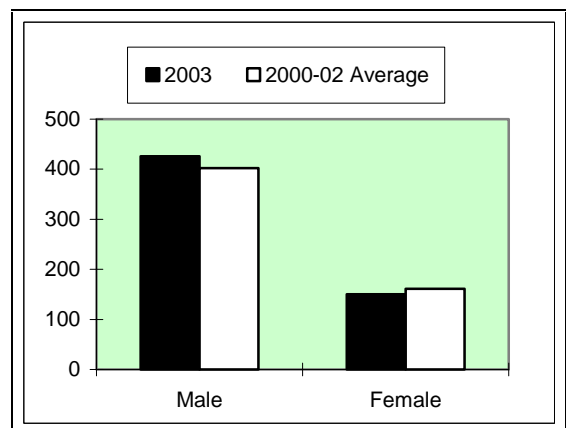
#### 3.1.1 Number of fatalities for 12 months ending January 2003, road user class

Road User Class <sup>1</sup>	2003	2000-02 Average	% Change
Driver	283	252.0	12.3%
Passenger	126	138.7	-9.1%
Pedestrian	93	101.0	-7.9%
Motorcyclist	60	60.7	-1.1%
Pedal Cyclist	14	10.7	31.3%
Other	0	0.7	N/A
<b>Total</b>	<b>576</b>	<b>563.7</b>	<b>2.2%</b>



#### 3.1.2 Number of fatalities for 12 months ending January 2003, sex of fatality

Sex of fatality	2003	2000-02 Average	% Change
Male	426	402.3	5.9%
Female	150	161.3	-7.0%
<b>Total <sup>2</sup></b>	<b>576</b>	<b>563.7</b>	<b>2.2%</b>

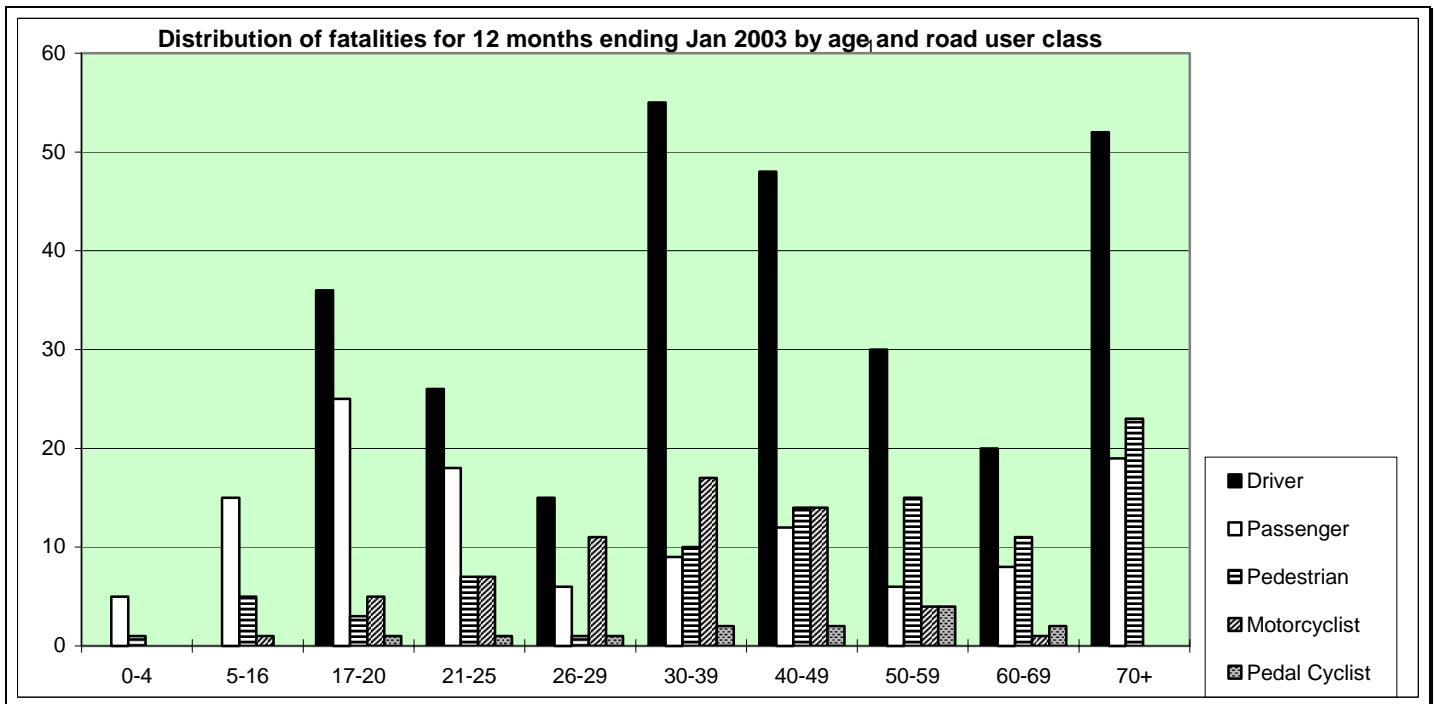
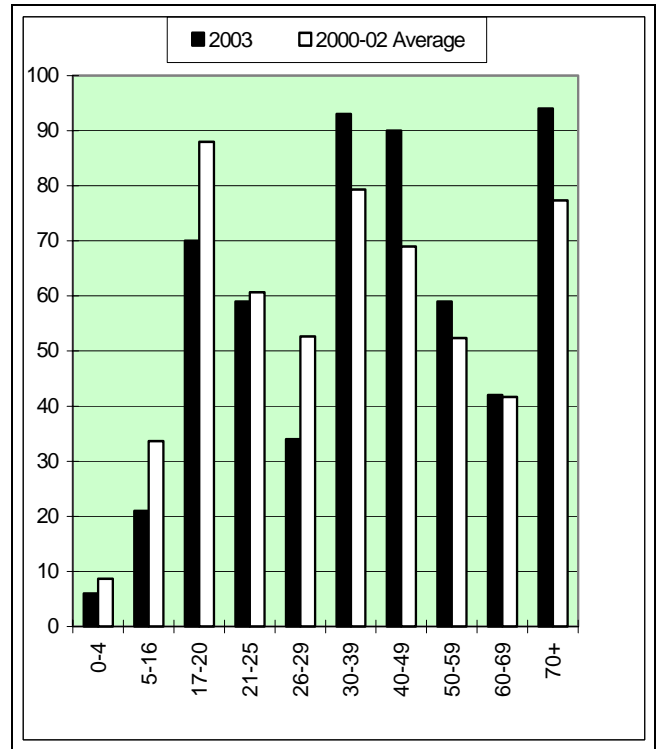


<sup>1</sup> The categories motorcyclist and pedal cyclist include passengers.

<sup>2</sup> Includes unknown sex

### 3.1.3 Number of fatalities for 12 months ending January 2003, age of fatality

Age	2003	2000-02 Average	% Change
0-4	6	8.7	-30.8%
5-16	21	33.7	-37.6%
17-20	70	88.0	-20.5%
21-25	59	60.7	-2.7%
26-29	34	52.7	-35.4%
30-39	93	79.3	17.2%
40-49	90	69.0	30.4%
50-59	59	52.3	12.7%
60-69	42	41.7	0.8%
70+	94	77.3	21.6%
Unknown	8	0.3	N/A
<b>Total</b>	<b>576</b>	<b>563.7</b>	<b>2.2%</b>

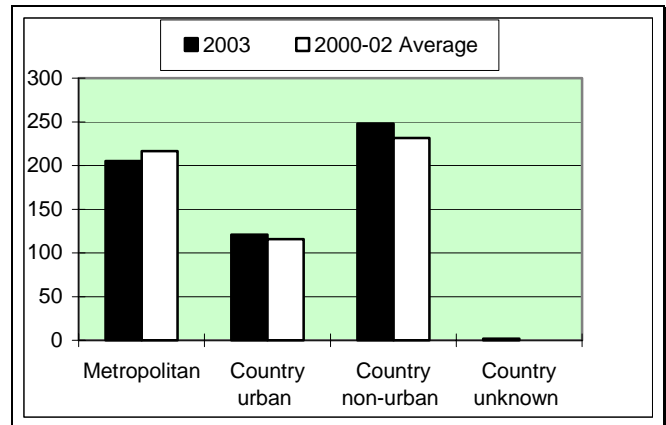


<sup>1</sup> The categories motorcyclist and pedal cyclist include passengers.



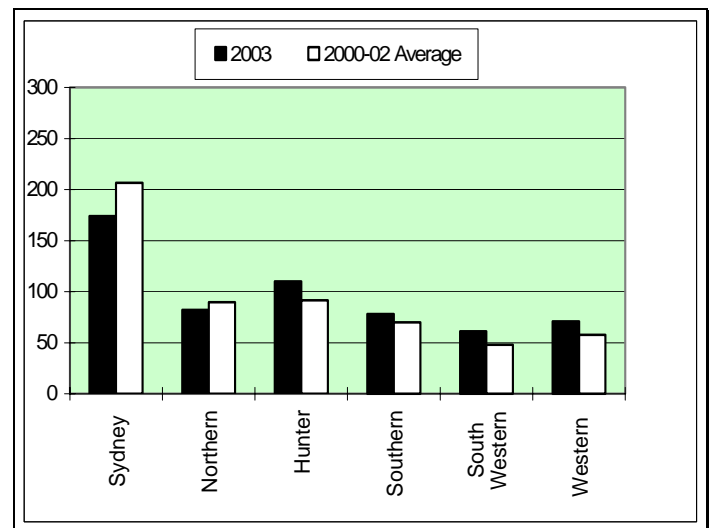
### 3.1.4 Number of fatalities for 12 months ending January 2003, urbanisation

Urbanisation	2003	2000-02 Average	% Change
Metropolitan	205	216.7	-5.4%
Country urban	121	115.7	4.6%
Country non-urban	248	231.3	7.2%
Country unknown	2	0.0	
<b>Total</b>	<b>576</b>	<b>563.7</b>	<b>2.2%</b>



### 3.1.5 Number of fatalities for 12 months ending January 2003, RTA Region

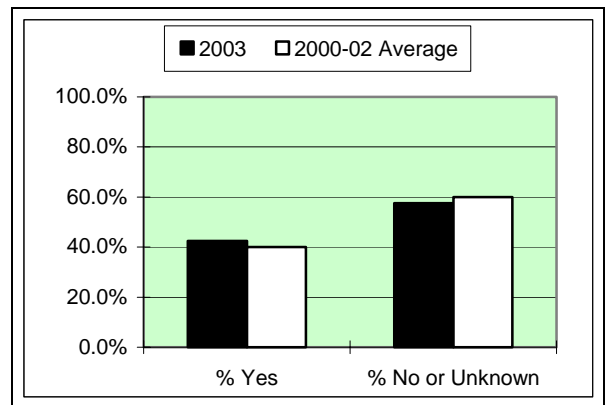
RTA Region	2003	2000-02 Average	% Change
Sydney	174	206.7	-15.8%
Northern	82	89.7	-8.6%
Hunter	110	91.7	20.0%
Southern	78	70.0	11.4%
South Western	61	48.0	27.1%
Western	71	57.7	23.1%
<b>Total</b>	<b>576</b>	<b>563.7</b>	<b>2.2%</b>



## 3.2 FACTORS INVOLVED IN FATAL ACCIDENTS

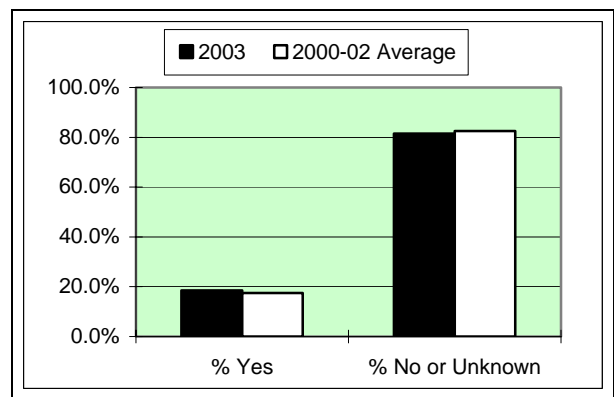
### 3.2.1 Number of fatal accidents for 12 months ending January 2003, speeding involvement

Excessive Speed?	2003	2000-02 Average	% Change
Yes	218	203.7	7.0%
% Yes	42.5%	40.0%	
No or Unknown	295	305.0	-3.3%
% No or Unknown	57.5%	60.0%	
<b>Total</b>	<b>513</b>	<b>508.7</b>	<b>0.9%</b>



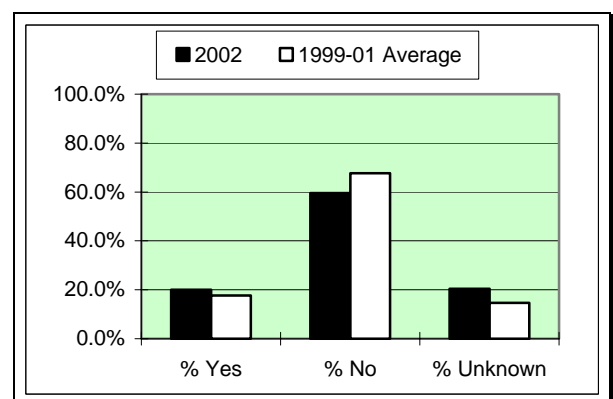
### 3.2.2 Number of fatal accidents for 12 months ending January 2003, fatigue involvement

Fatigue?	2003	2000-02 Average	% Change
Yes	95	88.7	7.1%
% Yes	18.5%	17.4%	
No or Unknown	418	420.0	-0.5%
% No or Unknown	81.5%	82.6%	
<b>Total</b>	<b>513</b>	<b>508.7</b>	<b>0.9%</b>



### 3.2.3 Number of fatal accidents for 12 months ending November 2002, alcohol involvement

Alcohol? <sup>1</sup>	2002	1999-01 Average	% Change
Yes	104	90.7	14.7%
% Yes	20.0%	17.7%	
No	310	346.7	-10.6%
% No	59.6%	67.6%	
Unknown	106	75.3	40.7%
% Unknown	20.4%	14.7%	
<b>Total</b>	<b>520</b>	<b>512.7</b>	<b>1.4%</b>

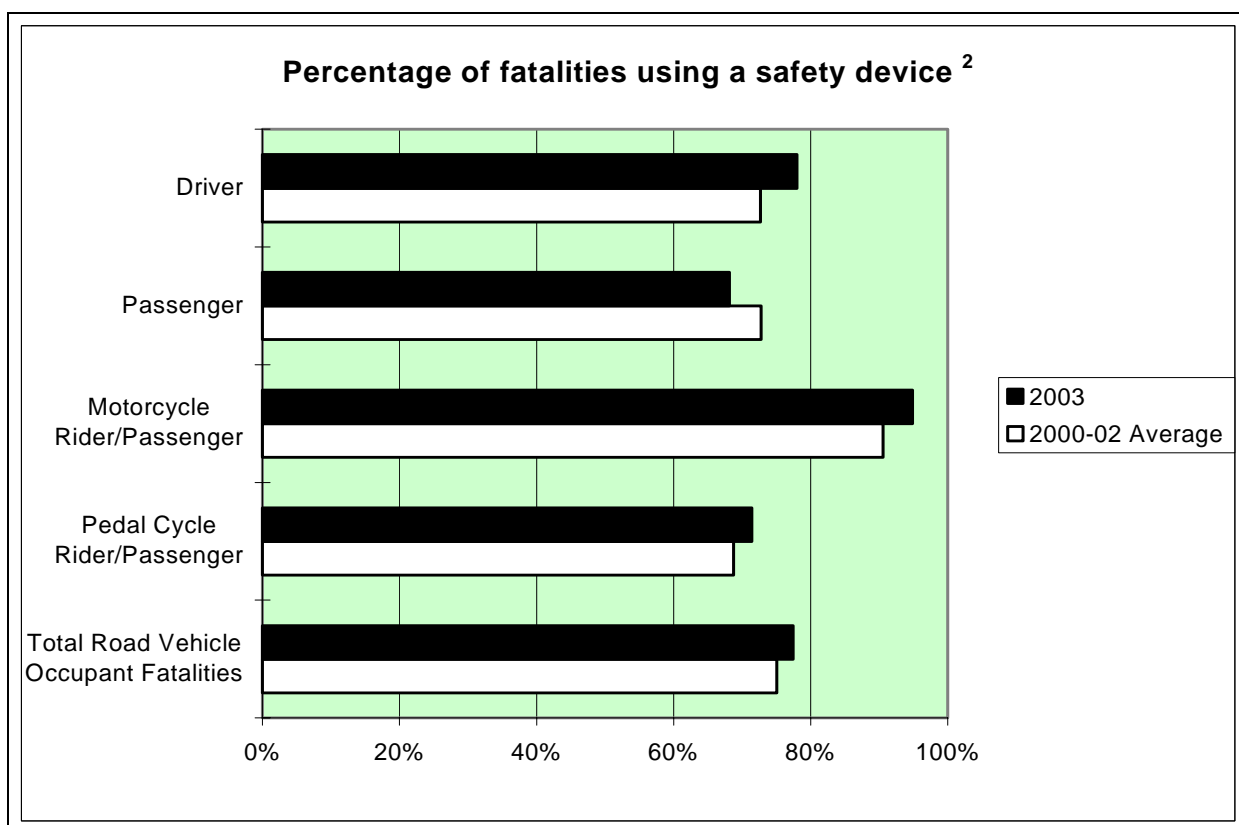


<sup>1</sup> Data for blood alcohol concentration are only available up to November 2002 inclusive.

### 3.3. SAFETY DEVICE USAGE OF FATALITIES

#### 3.3.1 Number of road vehicle fatalities for 12 months ending January 2003, safety device usage, road user class

Safety Device?	Driver		Passenger		Motorcycle Rider/Passenger		Pedal Cycle Rider/Passenger		Total Road Vehicle Occupant Fatalities <sup>1</sup>	
	2003	2000-02 Average	2003	2000-02 Average	2003	2000-02 Average	2003	2000-02 Average	2003	2000-02 Average
Worn	181	170.3	77	97.0	55	54.7	10	7.3	323	329.7
Not worn	51	64.0	36	36.3	3	5.7	4	3.3	94	109.3
Unknown	51	17.7	13	5.3	2	0.3	0	0.0	66	23.7
<b>Total</b>	<b>283</b>	<b>252.0</b>	<b>126</b>	<b>138.7</b>	<b>60</b>	<b>60.7</b>	<b>14</b>	<b>10.7</b>	<b>483</b>	<b>462.7</b>



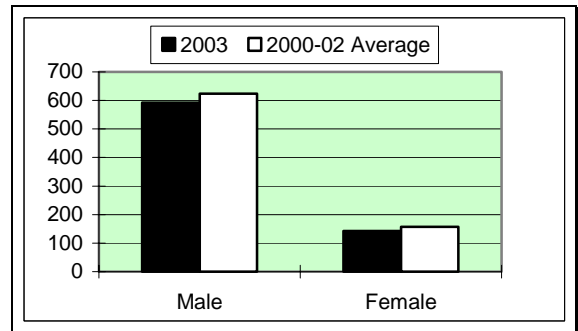
<sup>1</sup> Includes fatalities of other or unknown road user class

<sup>2</sup> Excludes cases of unknown safety device usage

### 3.4 MOTOR VEHICLE CONTROLLERS INVOLVED IN FATAL ACCIDENTS

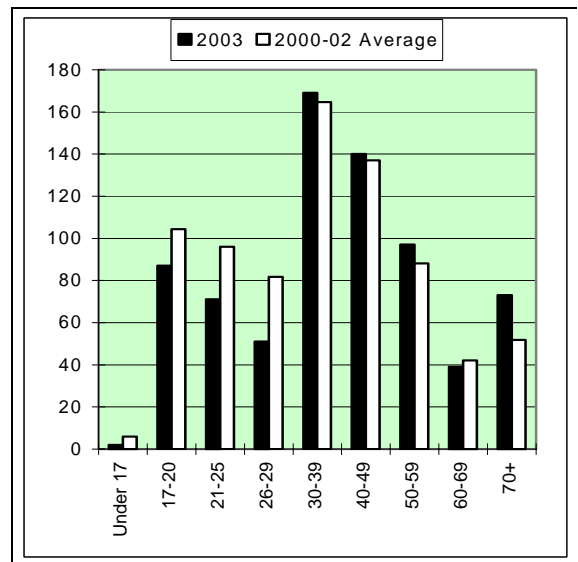
#### 3.4.1 Number of motor vehicle controllers involved in fatal accidents for 12 months ending January 2003, sex of controller

Sex	2003	2000-02 Average	% Change
Male	592	623.7	-5.1%
Female	142	157.0	-9.6%
Unknown	10	5.3	87.5%
<b>Total</b>	<b>744</b>	<b>786.0</b>	<b>-5.3%</b>



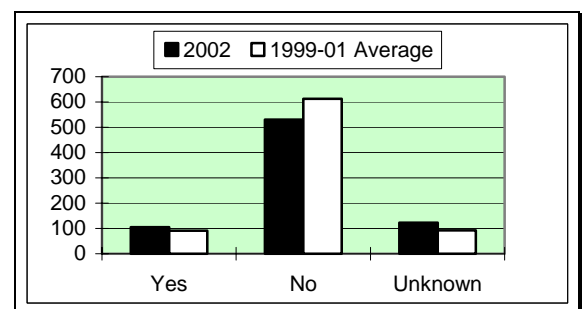
#### 3.4.2 Number of motor vehicle controllers involved in fatal accidents for 12 months ending January 2003, age of controller

Age	2003	2000-02 Average	% Change
Under 17	2	6.0	-66.7%
17-20	87	104.3	-16.6%
21-25	71	96.0	-26.0%
26-29	51	81.7	-37.6%
30-39	169	164.7	2.6%
40-49	140	137.0	2.2%
50-59	97	88.0	10.2%
60-69	39	42.0	-7.1%
70+	73	51.7	41.3%
Unknown	15	14.7	2.3%
<b>Total</b>	<b>744</b>	<b>786.0</b>	<b>-5.3%</b>



#### 3.4.3 Number of motor vehicle controllers involved in fatal accidents for 12 months ending November 2002, alcohol involvement

Alcohol Involvement <sup>1</sup>	2002	1999-01 Average	% Change
Yes	105	91.7	14.5%
No	531	612.3	-13.3%
Unknown	123	92.7	32.7%
<b>Total</b>	<b>759</b>	<b>796.7</b>	<b>-4.7%</b>



<sup>1</sup> Data for blood alcohol concentration are only available up to November 2002 inclusive.

### 3.5 CASUALTIES - OVERALL TREND

Casualty figures presented in this section are based on preliminary data supplied by the NSW Police from the Computerised Operational Policing System (COPS) database.

RTA Region figures are estimates based on combinations of NSW Police Local Area Commands. These combinations do not correspond exactly to RTA Region boundaries. NSW Police introduced revised Local Area Command boundaries on 1 July 2002.

#### 3.5.1 Twelve months comparison

RTA Region	12 Months ending Dec, 2002	12 Months ending Dec, 2001	% Change
Sydney	16,021	16,867	-5.0%
Northern	2,614	2,642	-1.1%
Hunter	4,033	4,038	-0.1%
Southern	2,990	2,997	-0.2%
South Western	1,222	1,352	-9.6%
Western	1,569	1,427	10.0%
<b>Total</b>	<b>28,449</b>	<b>29,323</b>	<b>-3.0%</b>

#### 3.5.2 Year-to-date comparison

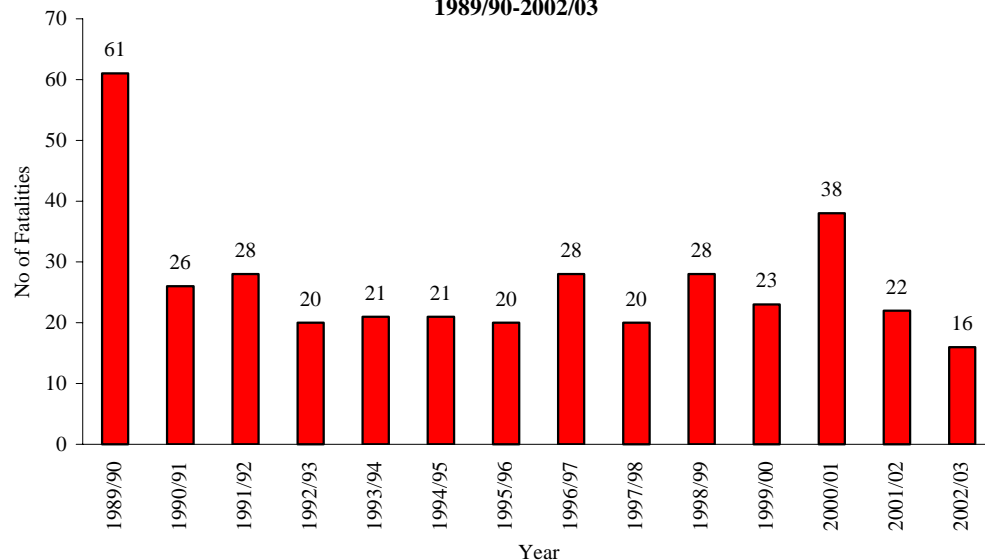
RTA Region	Jan to Dec, 2002	Jan to Dec, 2001	% Change
Sydney	16,021	16,867	-5.0%
Northern	2,614	2,642	-1.1%
Hunter	4,033	4,038	-0.1%
Southern	2,990	2,997	-0.2%
South Western	1,222	1,352	-9.6%
Western	1,569	1,427	10.0%
<b>Total</b>	<b>28,449</b>	<b>29,323</b>	<b>-3.0%</b>



## Overview of Road Toll for the 2002/03 Christmas/New Year Holiday Period

During the fifteen day 2002/03 Christmas/New Year Holiday Period (defined as the Police Operation *Safe Arrival* period from Friday 20 December 2002 to Friday 3 January 2003 inclusive) there were 16 fatalities on NSW roads, six fewer fatalities than the corresponding period in 2001/02.

**Fatalities, NSW, Christmas New Year Holiday Period  
(15 Day Police Operation *Safe Arrival* Period),  
1989/90-2002/03**



With 16 fatalities over the fifteen day Christmas/New Year Holiday period, the 2002/03 result was the lowest fatality total since records for the Police Operation *Safe Arrival* period were first compiled in 1980s. While any road death is regrettable, this year's outcome contrasts dramatically with the worst on record result experienced in 1989/90 (61 fatalities).

The following table of fatality data for the last five years shows that reductions during 2002/03 occurred across many key aspects of the road toll.

### Characteristics of Fatalities During the Police Operation *Safe Arrival* Period, 1998/99-2002/03

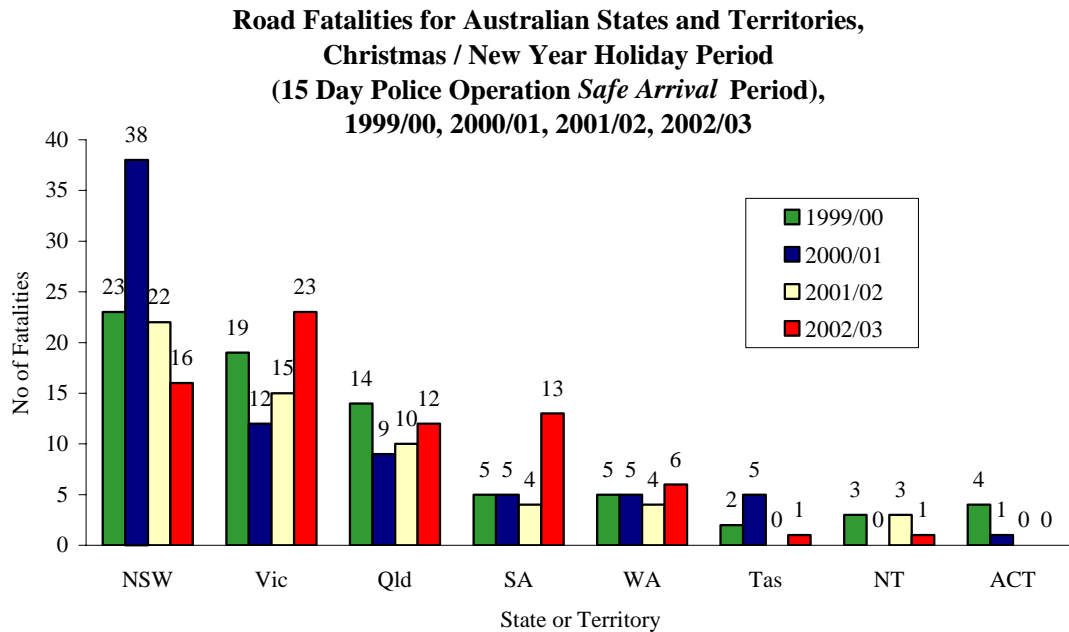
Class of Road User	1998/99	1999/2000	2000/01	2001/02	2002/03
Driver	10	10	17	9	10
Passenger	14	5	13	4	3
Pedestrian	3	4	1	4	1
Motorcyclist	1	4	6	3	2
Pedal Cyclist	0	0	0	2	0
Other	0	0	1	0	0
<b>Location</b>					
Sydney/Newcastle/ Wollongong Conurb	9	9	10	5	3
Rest of NSW	19	14	28	17	13
<b>Age Group</b>					
0-25	12	9	13	9	3
26-39	5	7	12	5	2
40-59	3	3	7	7	5
60+	8	4	6	1	5
<b>Behavioural Factors*</b>					
Alcohol	4	2	6	6	2
Speed	10	9	23	10	5
Fatigue	10	2	11	4	4
Seat Belt Not Worn	10	1	8	4	1
<b>Total</b>	<b>28</b>	<b>23</b>	<b>38</b>	<b>22</b>	<b>16</b>

\* Note: Behavioural factors are not mutually exclusive (eg a speeding and fatigue related crash would be counted twice in the above table) and these data should not be added together. Alcohol involvement data for 2002/03 is not yet complete.

Although fatalities were down, the preliminary results for Police Road Safety Operation *Safe Arrival* during the 2002/03 Christmas/New Year Holiday Period showed that many motorists were still taking unacceptable risks on NSW roads. Over the fifteen days of Operation *Safe Arrival*, Police conducted

305,683 breath tests and charged 1,474 persons with drink driving offences. There were also 29,400 speed offences detected (excluding fixed cameras). Police recorded a total of 895 persons injured from 2,393 crashes, up by 10% and 15% respectively on the results for the corresponding period in 2001/02.

Across the whole of Australia, there were 72 fatalities during the fifteen day 2002/03 Christmas/New Year Holiday Period, up by 14 (24%) on the corresponding period during 2001/02. Compared with 2001/02, the decrease in fatalities in NSW (down by 6) in 2002/03 was more than offset by increases in South Australia (up by 9), Victoria (up by 8), Queensland (up by 2), Western Australia (up by 2) and Tasmania (up by 1).



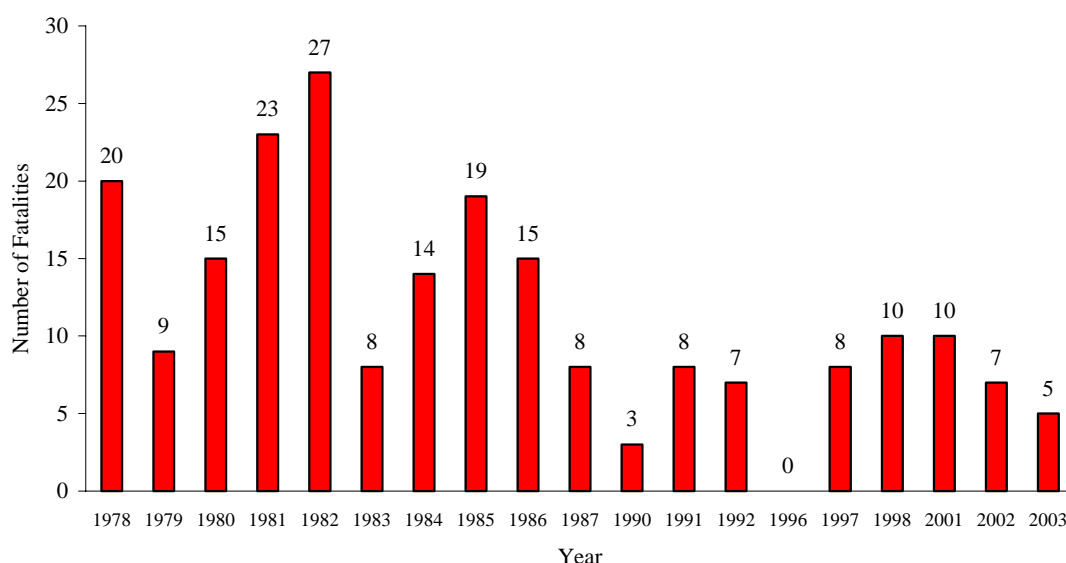


## OVERVIEW OF THE ROAD TOLL FOR THE AUSTRALIA DAY HOLIDAY WEEKEND 2003

During the four day 2003 Australia Day Holiday Weekend (from Friday 24 January to Monday 27 January inclusive) there were 5 persons killed on NSW roads, two (29%) fewer fatalities than the 2002 Australia Day Holiday Weekend.

The 2003 result is one of the lowest results since 1978. The only lower four day Australia Day Holiday Weekend results occurred in 1996 (with no fatalities) and 1990 (with three fatalities). The worst result occurred in 1982 (with 27 fatalities).

**Fatalities, NSW, Australia Day Holiday Weekend (4 Day Period),  
1978-2003**



*Note that some years (1988-1989, 1993-1995, 1999-2000) are not shown in the above graph because the Australia Day Public Holiday for those years fell on a Tuesday, Wednesday or Thursday and thus did not constitute a holiday long weekend.*

### Characteristics of Fatalities During the Australia Day Holiday Weekend, 1997-2002

Class of Road User	1997	1998	2001	2002	2003
Driver	4	3	3	2	2
Passenger	3	5	5	1	1
Pedestrian	1	2	1	4	1
Motorcyclist	0	0	1	0	0
Pedal Cyclist	0	0	0	0	1
Location					
Sydney/Newcastle/ Wollongong Conurb	4	1	4	5	2
Rest of NSW	4	9	6	2	3
Age Group					
0-25	4	5	8	1	0
26-39	3	3	1	2	0
40-59	0	0	1	1	2
60+	1	2	0	3	3
Behavioural Factors*					
Alcohol	2	1	3	2	1
Speed	5	6	7	1	0
Fatigue	1	0	0	1	1
Seat Belt Not Worn	1	0	1	0	0
Total	8	10	10	7	5

*\* Note: Behavioural factors are not mutually exclusive (eg a speeding and fatigue related crash would be counted twice in the above table) and these data should not be added together. Alcohol involvement data for 2003 is not yet complete.*

The NSW Police conducted Operation *Safe Return* during the 2003 Australia Day Holiday Weekend, targeting unsafe road user behaviours such as speeding, driver fatigue and restraint non-usage.