



Transport
for NSW

Behavioural risk factors in NSW crashes and casualties

2000 - 2012

Casualties, year, behavioural factor and degree of casualty

NSW Centre for Road Safety statistics include the contribution of behavioural factors to the fatalities and casualties resulting from road crashes occurring in each year. Speeding was a factor in the deaths of 818 people over five years 2008-2012. In addition to those killed, more than 4100 people were injured each year in speed-related crashes between 2008 and 2012.

The following table and graphs show the numbers of people killed and injured in the years 2000 to 2012 in crashes that have involved speeding, fatigue or alcohol or that were not wearing an available restraint at the time of the crash.

Number of Casualties by year, behavioural factor and degree of casualty

| Year | Speed Related Crash | | | Fatigue Related Crash | | | Alcohol Related Crash | | | Restraint Non Usage | | |
|-------------|---------------------|--------------|--------------|-----------------------|--------------|--------------|-----------------------|--------------|--------------|---------------------|------------|------------|
| | Killed | Injured | Total | Killed | Injured | Total | Killed | Injured | Total | Killed | Injured | Total |
| 2000 | 235 | 4,710 | 4,945 | 122 | 2,175 | 2,297 | 107 | 1,853 | 1,960 | 92 | 609 | 701 |
| 2001 | 226 | 5,241 | 5,467 | 78 | 1,924 | 2,002 | 99 | 1,725 | 1,824 | 89 | 615 | 704 |
| 2002 | 256 | 4,905 | 5,161 | 110 | 2,097 | 2,207 | 130 | 1,679 | 1,809 | 83 | 435 | 518 |
| 2003 | 209 | 4,682 | 4,891 | 75 | 1,949 | 2,024 | 102 | 1,503 | 1,605 | 72 | 416 | 488 |
| 2004 | 195 | 4,484 | 4,679 | 84 | 1,937 | 2,021 | 84 | 1,454 | 1,538 | 65 | 365 | 430 |
| 2005 | 190 | 4,269 | 4,459 | 95 | 1,926 | 2,021 | 84 | 1,343 | 1,427 | 57 | 331 | 388 |
| 2006 | 197 | 4,365 | 4,562 | 89 | 2,019 | 2,108 | 112 | 1,488 | 1,600 | 57 | 367 | 424 |
| 2007 | 140 | 4,129 | 4,269 | 87 | 2,029 | 2,116 | 91 | 1,506 | 1,597 | 47 | 332 | 379 |
| 2008 | 152 | 3,870 | 4,022 | 61 | 2,055 | 2,116 | 78 | 1,431 | 1,509 | 46 | 319 | 365 |
| 2009 | 207 | 4,089 | 4,296 | 78 | 2,078 | 2,156 | 94 | 1,380 | 1,474 | 67 | 318 | 385 |
| 2010 | 161 | 4,264 | 4,425 | 58 | 1,861 | 1,919 | 74 | 1,183 | 1,257 | 31 | 289 | 320 |
| 2011 | 152 | 4,664 | 4,816 | 72 | 1,998 | 2,070 | 70 | 1,182 | 1,252 | 40 | 348 | 388 |
| 2012 | 146 | 3,798 | 3,944 | 62 | 1,959 | 2,021 | 56 | 1,033 | 1,089 | 31 | 321 | 352 |

Notes:

Speed Related Crash - Casualties from a crash involving at least one speeding motor vehicle controller +

Fatigue Related Crash - Casualties from a crash involving at least one fatigued motor vehicle controller +

Alcohol Related Crash- Casualties from a crash involving at least one motor vehicle controller with an illegal blood alcohol concentration

Restraint Non Usage - Motor vehicle occupant casualties who were not wearing an available restraint for that seating position

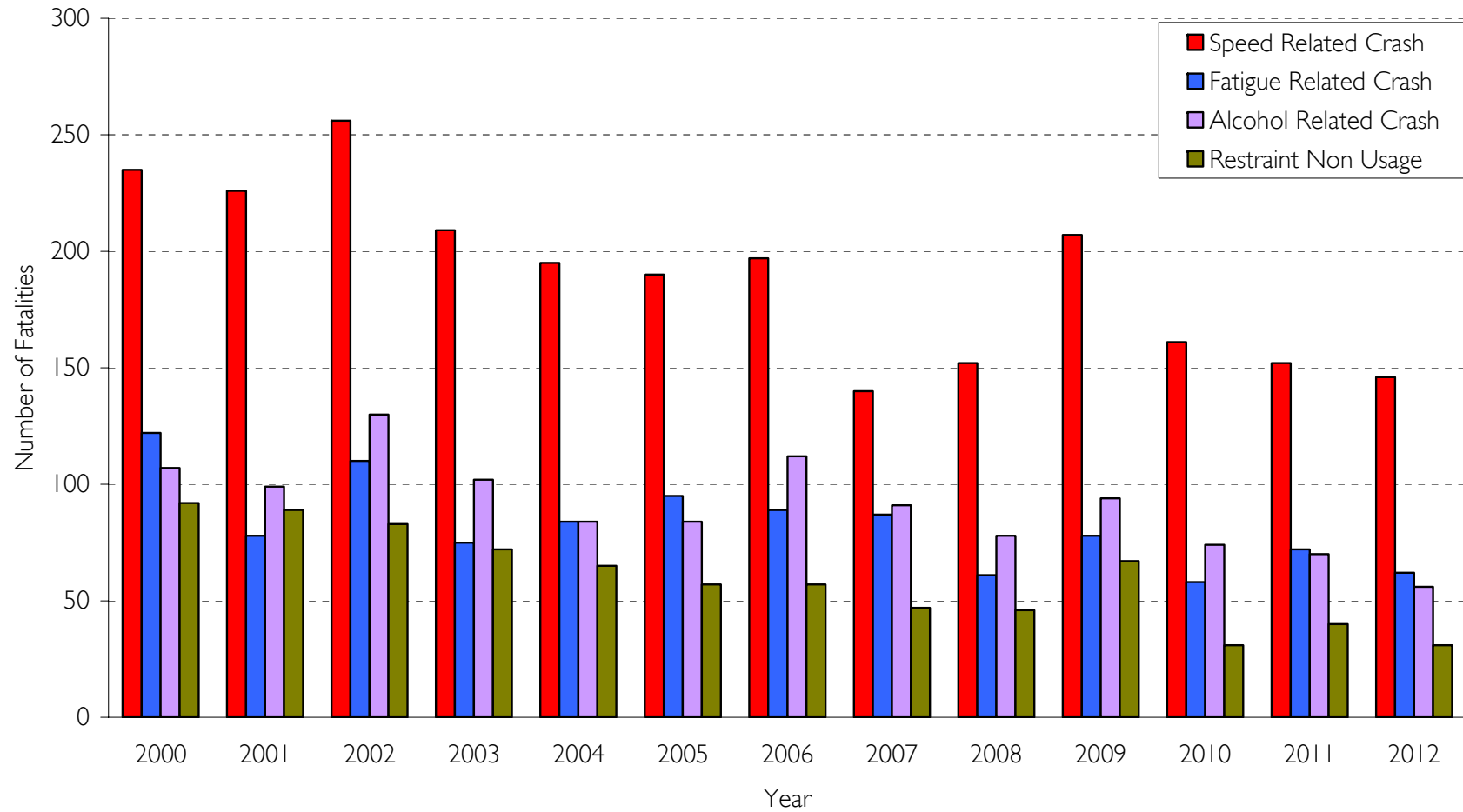
Please note that these behavioural factors are not mutually exclusive. For example a crash may involve both speed and illegal alcohol and casualties from this crash would be included in the speed related crash casualties and the alcohol related crash categories

Note that the illegal alcohol levels defined for some motor vehicle controllers (such as novice, professional or heavy vehicle drivers) may have varied during these years

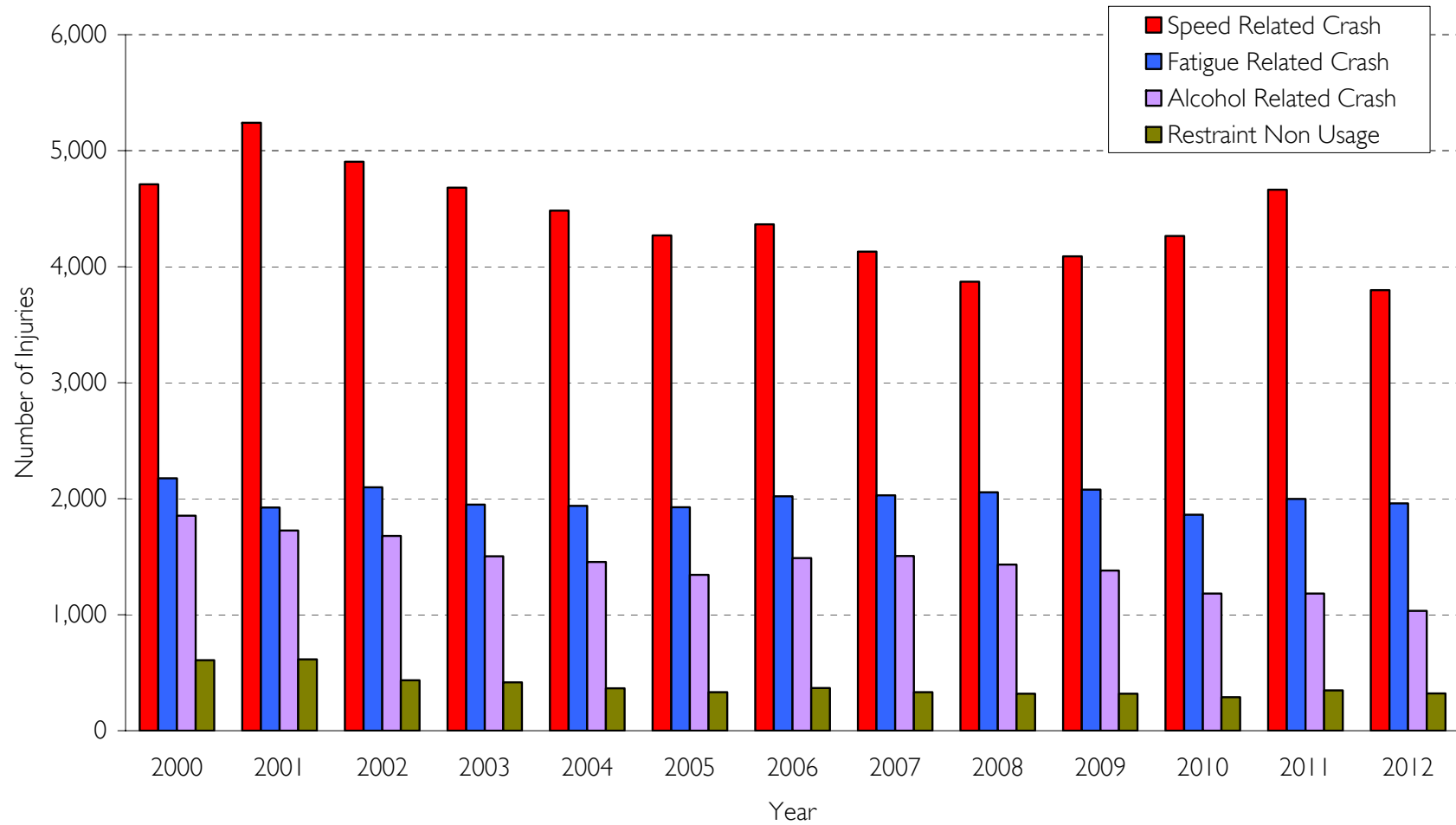
The incidence of unknown alcohol crashes may have also varied over these years.

+ Refer to the Road Traffic Crashes in NSW Statistical Statement document for more complete definitions of a Speed Related and Fatigue Related crash

Fatalities, Year, Behavioural Factor, 2000 to 2012



Injuries, Year, Behavioural Factor, 2000 to 2012



Fatalities, year, behavioural factor, percent of total fatalities

While the NSW Road Toll has decreased from in the year 2000 to in 2012 the proportion of these that are related to the behavioural factors of speeding, fatigue, alcohol and non usage of restraints remains high. Speeding remains the biggest killer on our roads. In NSW speeding is a factor in about 40 per cent of road deaths. This means over the years 2000 to 2012 on average 190 people died each year in speed-related crashes in NSW.

The following table and graph show the percentage of total fatalities in the years 2000 to 2012 in crashes that have involved speeding, fatigue or alcohol or that were not wearing an available restraint at the time of the crash.

Percentage of Total Fatalities, by year and behavioural factors

| Year | Percentage of Total Fatalities # | | | |
|-------------|----------------------------------|------------|------------|---------------------|
| | Speed | Fatigue | Alcohol | Restraint Non Usage |
| 2000 | 39% | 20% | 18% | 22% |
| 2001 | 43% | 15% | 19% | 25% |
| 2002 | 46% | 20% | 23% | 21% |
| 2003 | 39% | 14% | 19% | 19% |
| 2004 | 38% | 16% | 16% | 19% |
| 2005 | 37% | 19% | 17% | 17% |
| 2006 | 40% | 18% | 23% | 16% |
| 2007 | 32% | 20% | 21% | 16% |
| 2008 | 41% | 16% | 21% | 18% |
| 2009 | 46% | 17% | 21% | 21% |
| 2010 | 40% | 14% | 18% | 11% |
| 2011 | 42% | 20% | 19% | 16% |
| 2012 | 40% | 17% | 15% | 13% |

Note:

Restraint non usage percentage is calculated against total motor vehicle occupant fatalities

Percentage of Fatalities, Year, Behavioural Factor, 2000 to 2012

