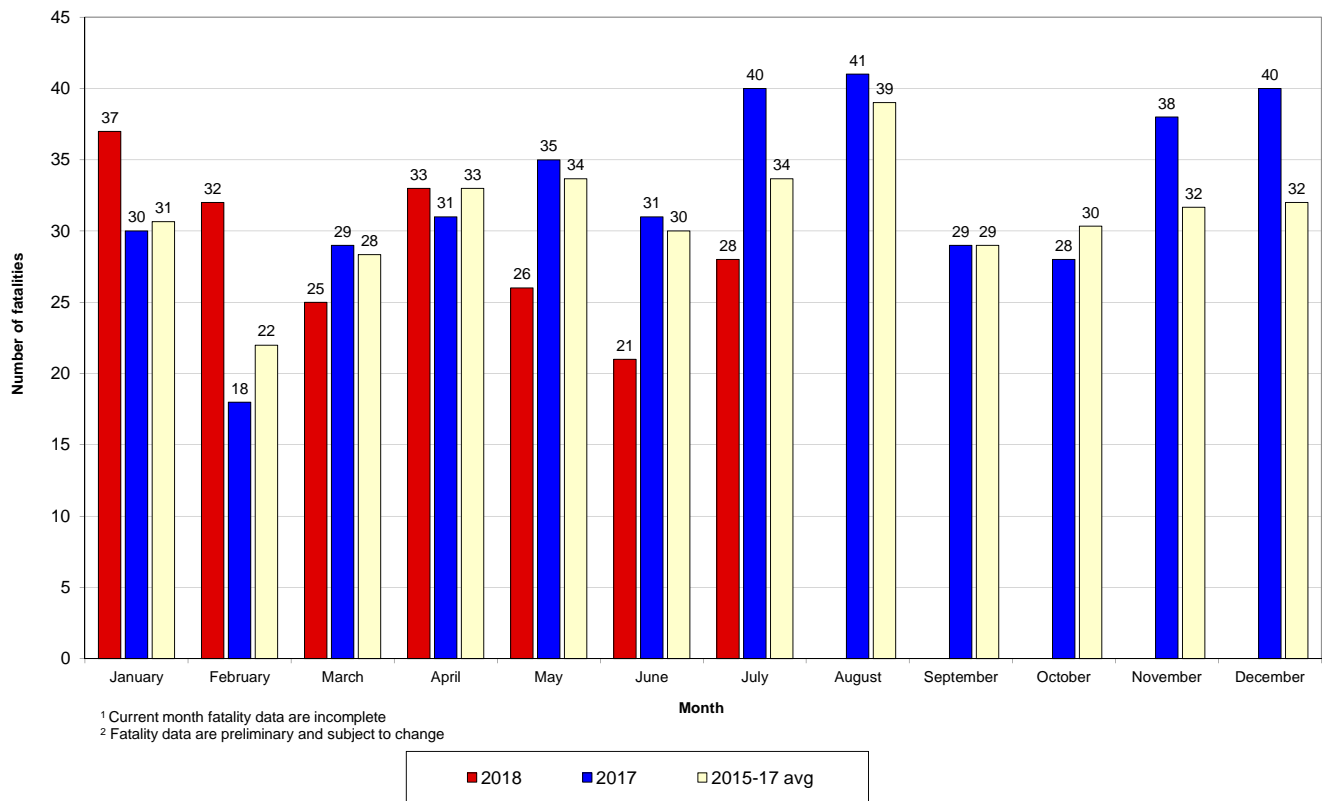


	2018	2017	+/-	% change
Calendar year to date	202	211	-9	-4%
July to date	28	37	-9	-24%
12-month period to date	381	367	14	4%

Fatalities 12-month moving total - 2013 to date



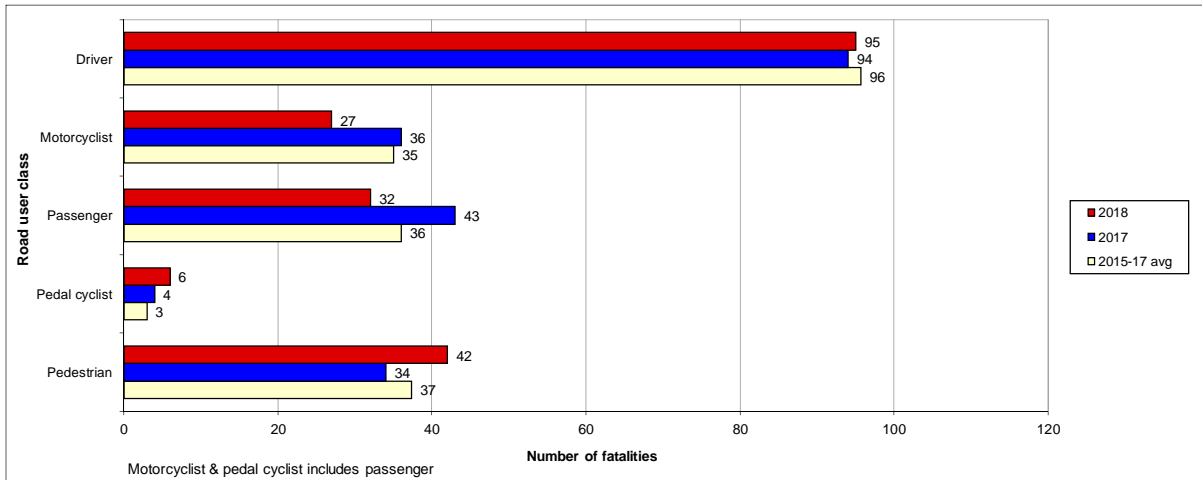
Road fatality comparative statistics by month¹ for 2017², 2018² and the average for the 3-year period 2015-2017²



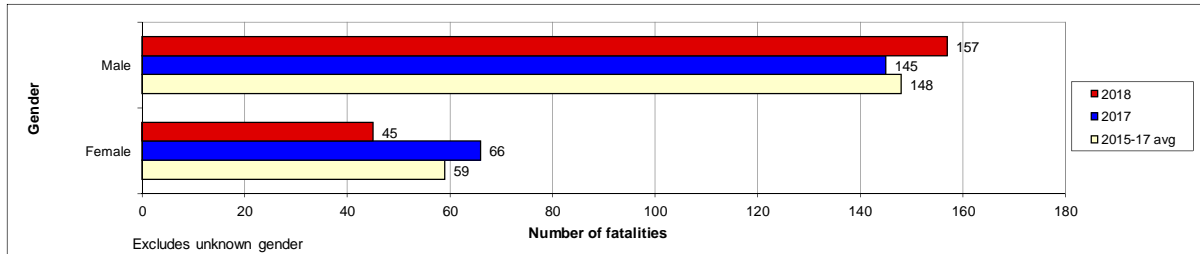
Preliminary Data - Note: Fatalities will be removed from statistics if subsequent Police or Coronial investigation shows that they did not fall within National reporting guidelines. Fatalities will be added from a crash occurring prior to today's date where a person subsequently dies within 30 days or the crash is reported late. Fatalities are deaths which occurred within 30 days of a crash as a result of injuries received in the crash. The crash must have occurred within the surveyed road reserve.

Road fatality comparative statistics for the period 01 January to 26 July 2017², 2018² and the average for the same period in 2015, 2016 and 2017²

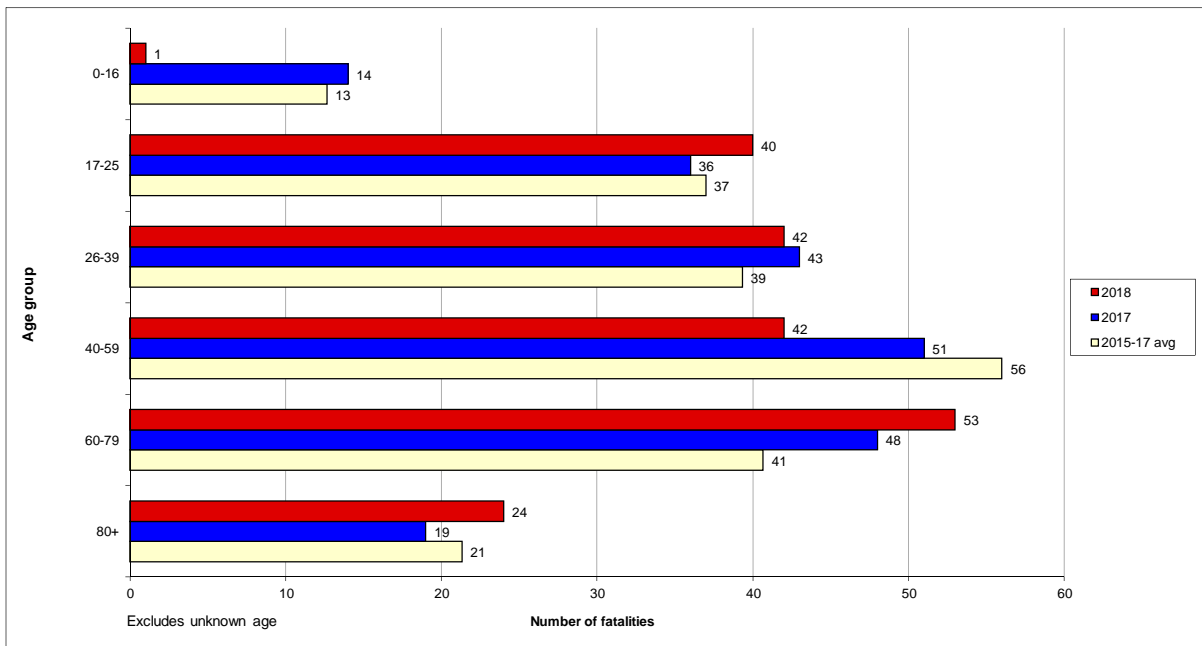
Road user class



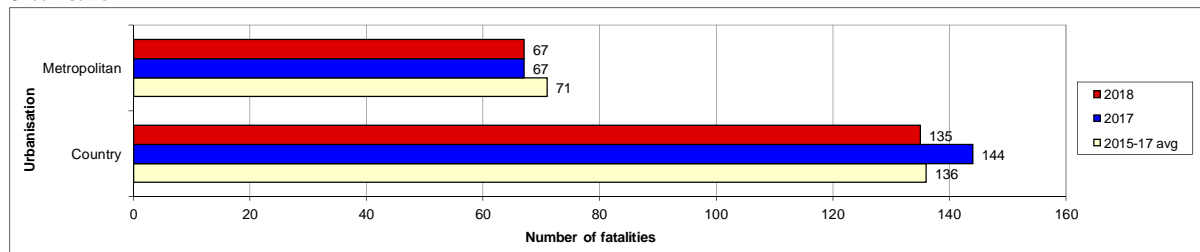
Gender



Age group



Urbanisation



² Fatality data are preliminary and subject to change

Road fatality comparative statistics for the period 01 January to 26 July 2017², 2018²
and the average for the same period in 2015, 2016 and 2017²

Road user class

	2018	2017	+/-	% change	3-year average
Driver	95	94	1	1%	95.7
Motorcyclist	27	36	-9	-25%	35.0
Passenger	32	43	-11	-26%	36.0
Pedal cyclist	6	4	2	50%	3.0
Pedestrian	42	34	8	24%	37.3

Motorcyclist & pedal cyclist includes passenger

Gender

	2018	2017	+/-	% change	3-year average
Male	157	145	12	8%	148.0
Female	45	66	-21	-32%	59.0

Excludes unknown gender

Age group

	2018	2017	+/-	% change	3-year average
0-16	1	14	-13	-93%	12.7
17-25	40	36	4	11%	37.0
26-39	42	43	-1	-2%	39.3
40-59	42	51	-9	-18%	56.0
60-79	53	48	5	10%	40.7
80+	24	19	5	26%	21.3

Excludes unknown age

Urbanisation

	2018	2017	+/-	% change	3-year average
Metropolitan	67	67	0	0%	71.0
Country	135	144	-9	-6%	136.0

² Fatality data are preliminary and subject to change

Road Toll Update for NSW

up to and including
Thursday, 26 July 2018

Fatalities advised since last update issued: 0
Fatalities excluded since last update issued: 0

	CALENDAR YEAR TO MIDNIGHT 26 July					12-MONTH PERIOD ENDING 26 July				
	2018 (Prelim)	2017 (Prelim)	DIFF.	3-YEAR AVERAGE	DIFF.	2018 (Prelim)	2017 (Prelim)	DIFF.	3-YEAR AVERAGE	DIFF.
Fatal crashes	189	189	0	191	-2	352	336	16	328	24
Fatalities										
Driver	95	94	1	96	-1	188	168	20	164	24
Passenger	32	43	-11	36	-4	71	66	5	59	12
Motorcyclist*	27	36	-9	35	-8	50	65	-15	65	-15
Pedestrian	42	34	8	37	5	62	61	1	61	1
Pedal cyclist*	6	4	2	3	3	10	7	3	6	4
Other	0	0	0	0	0	0	0	0	0	0
TOTAL KILLED	202	211	-9	207	-5	381	367	14	356	25

* Includes passengers

PRELIMINARY 2017 TOTALS:	Fatal crashes 352	Fatalities 390
---------------------------------	--------------------------	-----------------------

Preliminary Data -Note: Fatalities will be removed from statistics if subsequent Police or Coronial investigation shows that they did not fall within National reporting guidelines. Fatalities will be added from a crash occurring prior to today's date where a person subsequently dies within 30 days or the crash is reported late. Typically, these variations may result in a statewide annual decrease of up to 12 fatalities from the initial preliminary figure.

[Click here](#) for more information about traffic crash statistics

[Click here](#) for more information about the Centre for Road Safety