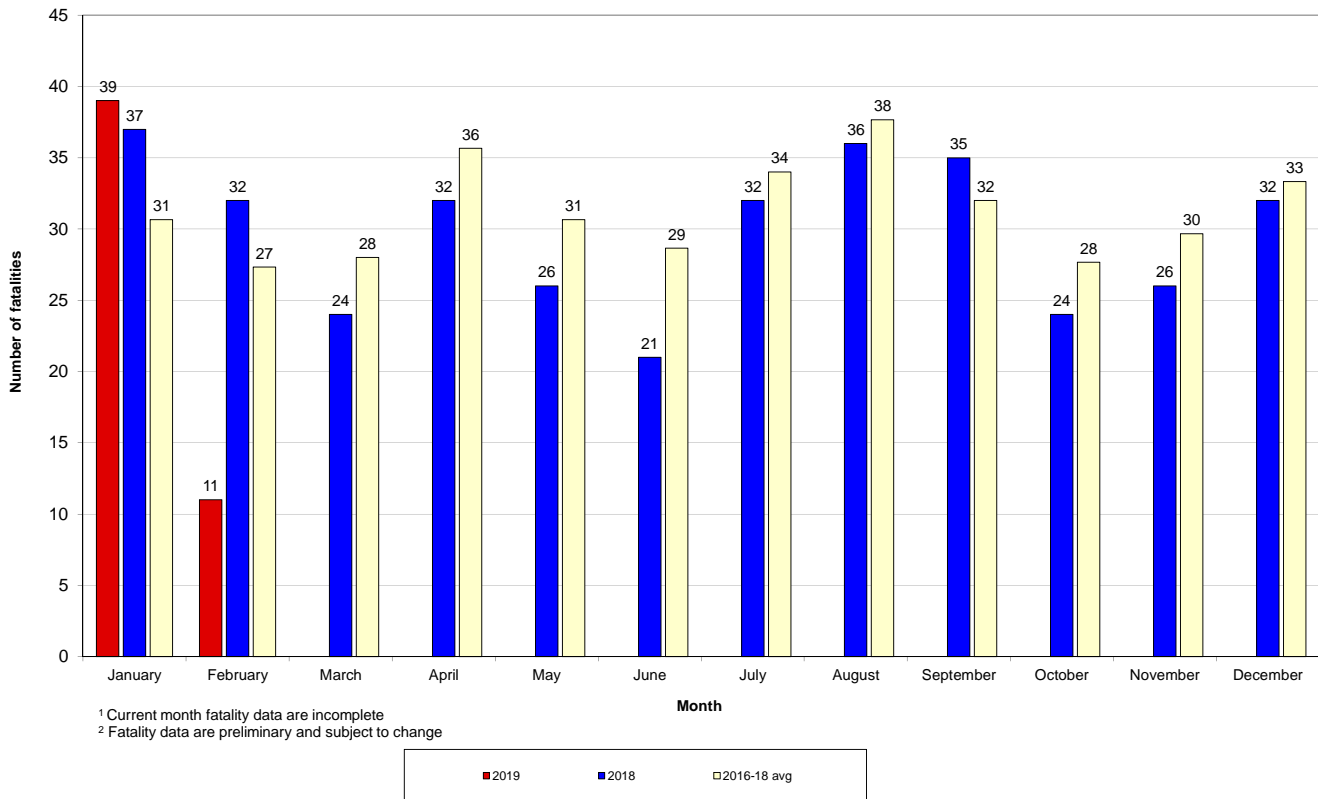


	2019	2018	+/-	% change
Calendar year to date	50	50	0	0%
February to date	11	13	-2	-15%
12-month period to date	357	401	-44	-11%

Fatalities 12-month moving total - 2014 to date



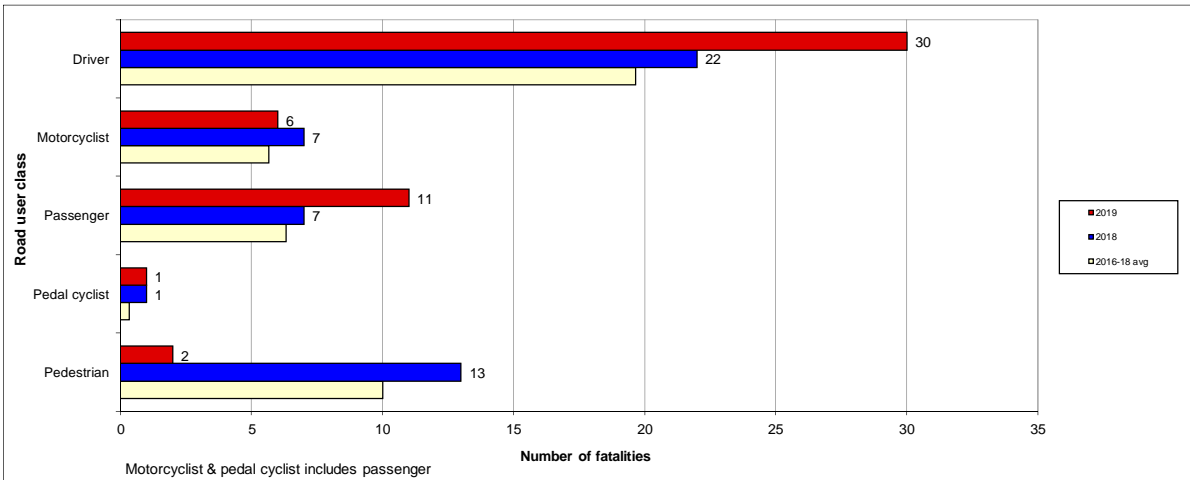
Road fatality comparative statistics by month¹ for 2018², 2019² and the average for the 3-year period 2016-2018²



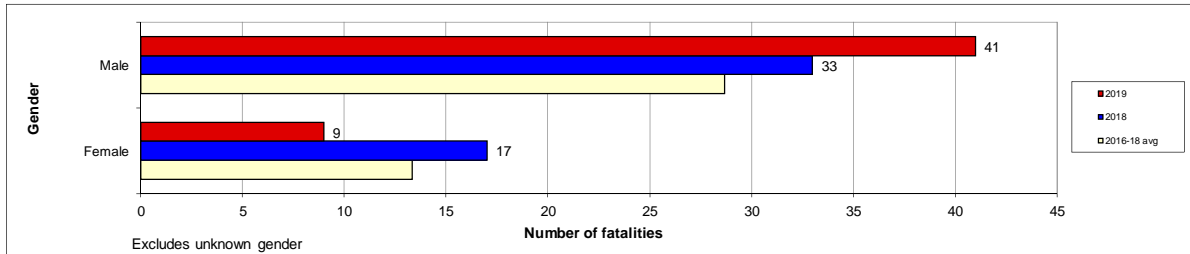
Preliminary Data - Note: Fatalities will be removed from statistics if subsequent Police or Coronial investigation shows that they did not fall within National reporting guidelines. Fatalities will be added from a crash occurring prior to today's date where a person subsequently dies within 30 days or the crash is reported late. Fatalities are deaths which occurred within 30 days of a crash as a result of injuries received in the crash. The crash must have occurred within the surveyed road reserve.

Road fatality comparative statistics for the period 01 January to 14 February 2018², 2019² and the average for the same period in 2016, 2017 and 2018²

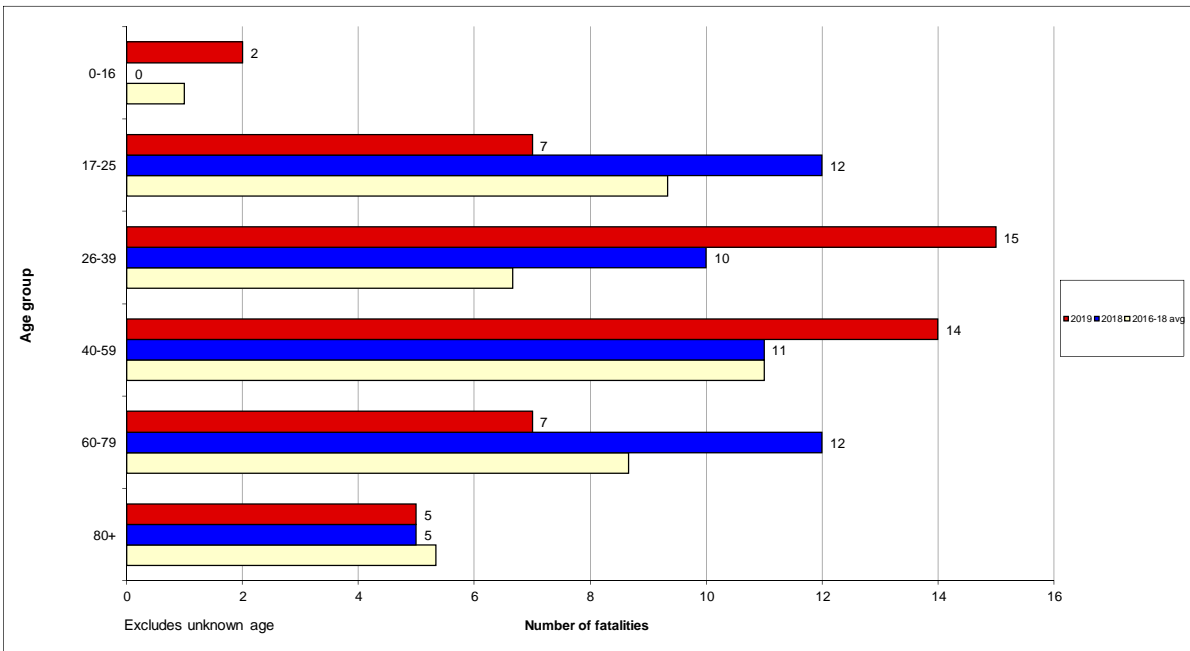
Road user class



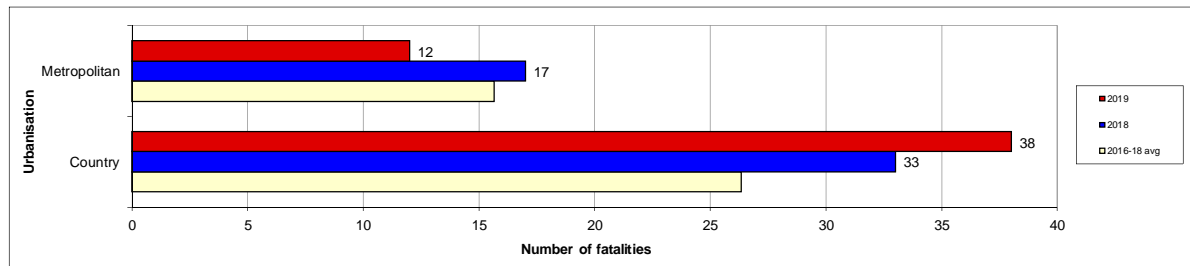
Gender



Age group



Urbanisation



² Fatality data are preliminary and subject to change

Road fatality comparative statistics for the period 01 January to 14 February 2018², 2019² and the average for the same period in 2016, 2017 and 2018²

Road user class

	2019	2018	+/-	% change	3-year average
Driver	30	22	8	36%	19.7
Motorcyclist	6	7	-1	-14%	5.7
Passenger	11	7	4	57%	6.3
Pedal cyclist	1	1	0	0%	0.3
Pedestrian	2	13	-11	-85%	10.0

Motorcyclist & pedal cyclist includes passenger

Gender

	2019	2018	+/-	% change	3-year average
Male	41	33	8	24%	28.7
Female	9	17	-8	-47%	13.3

Excludes unknown gender

Age group

	2019	2018	+/-	% change	3-year average
0-16	2	0	2	N/A	1.0
17-25	7	12	-5	-42%	9.3
26-39	15	10	5	50%	6.7
40-59	14	11	3	27%	11.0
60-79	7	12	-5	-42%	8.7
80+	5	5	0	0%	5.3

Excludes unknown age

Urbanisation

	2019	2018	+/-	% change	3-year average
Metropolitan	12	17	-5	-29%	15.7
Country	38	33	5	15%	26.3

² Fatality data are preliminary and subject to change

Road Toll Update for NSW

up to and including
Thursday, 14 February 2019

Fatalities advised since last update issued: 0
Fatalities excluded since last update issued: 0

	CALENDAR YEAR TO MIDNIGHT 14 February					12-MONTH PERIOD ENDING 14 February				
	2019 (Prelim)	2018 (Prelim)	DIFF.	3-YEAR AVERAGE	DIFF.	2019 (Prelim)	2018 (Prelim)	DIFF.	3-YEAR AVERAGE	DIFF.
Fatal crashes	43	48	-5	40	3	330	365	-35	346	-16
Fatalities										
Driver	30	22	8	20	10	176	186	-10	175	1
Passenger	11	7	4	6	5	62	83	-21	65	-3
Motorcyclist*	6	7	-1	6	0	54	61	-7	63	-9
Pedestrian	2	13	-11	10	-8	57	62	-5	65	-8
Pedal cyclist*	1	1	0	0	1	8	9	-1	7	1
Other	0	0	0	0	0	0	0	0	0	0
TOTAL KILLED	50	50	0	42	8	357	401	-44	374	-17

* Includes passengers

PRELIMINARY 2018 TOTALS:	Fatal crashes 335	Fatalities 357
---------------------------------	--------------------------	-----------------------

Preliminary Data -Note: Fatalities will be removed from statistics if subsequent Police or Coronial investigation shows that they did not fall within National reporting guidelines. Fatalities will be added from a crash occurring prior to today's date where a person subsequently dies within 30 days or the crash is reported late. Typically, these variations may result in a statewide annual decrease of up to 12 fatalities from the initial preliminary figure.

[Click here](#) for more information about traffic crash statistics

[Click here](#) for more information about the Centre for Road Safety